

GENERAL BOOK

2022-2023

M
ANGELO
ceramica

Perfection
has never been so close...

Are you ready?



M
ANGELO
ceramica

Michelangelo Buonarroti was a great artist and sculptor who famously said "i saw the angel in the marble and carved until I set him free."

We are an Italian/Iranian brand that tries to make a bridge between the two cultures. The tastes of art, from the east and west by gathering their best architects, interior designers and tile experts.

Our designs are inspired by natural surfaces and textures, classic and contemporary arts, cultural symbols and latest trends. Our mission is to increase the standards of the market by producing innovative, high quality and elegant ceramic tiles to please our customers and make living spaces practical and elegant.

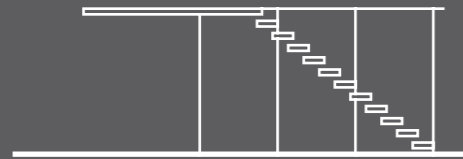
Michelangelo Buonarroti era un grande artista e scultore che pronunciò una celebre frase "ho visto un angelo nel blocco di marmo e l'ho scolpito fino a quando non è stato libero".

Angelo Ceramica nasce da una collaborazione italiano iraniana nel tentativo di costruire un ponte tra le due culture, cercando di cogliere il gusto dell'arte dall'est all'ovest radunando le migliori architetture, i migliori interior designers e le migliori esperienze ceramiche. I nostri design sono ispirati da superfici naturali, arti classiche e contemporane, dalle rispettive tradizioni culturali e dagli ultimi trend del mercato.

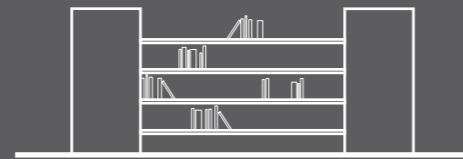
La nostra missione è elevare gli standard qualitativi del mercato, producendo in modo innovativo, con attenzione alla eleganza ceramica nel rispetto della migliore qualità possibile, in modo da soddisfare i nostri clienti per creare ambienti pratici ed eleganti.

APPLICATION

Size



Floors & Stairs
Pavimenti e Scale



Shelve & Console
Ripiani e Consolle



Interior Design
Design di Interni



Sliding Walls
Pareti Scorrevoli



Residential
Residenziale



Office
Ufficio



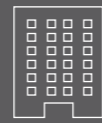
Shop & Malls
Negozio e centri commerciali



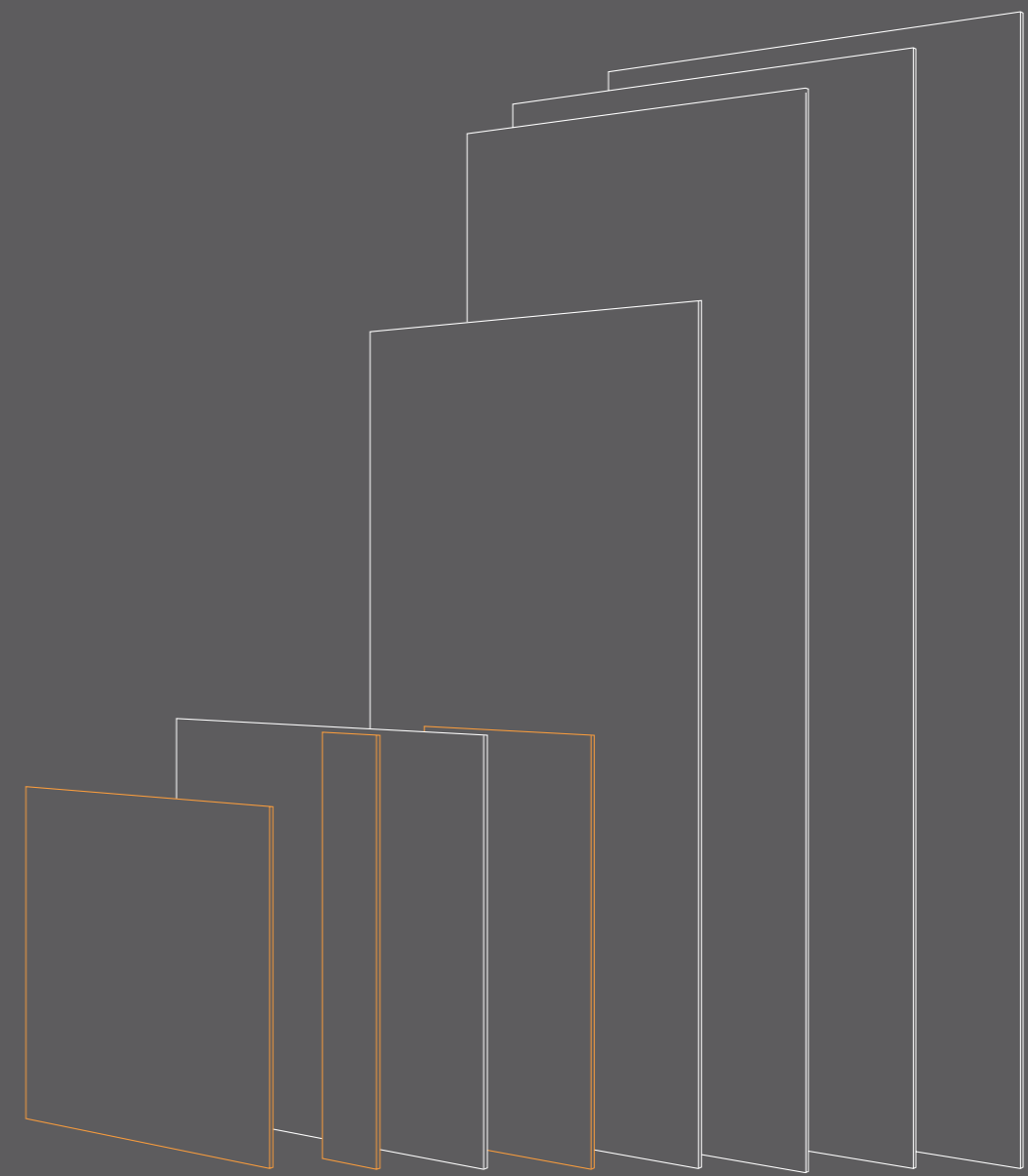
Transportation
Trasporti



Restaurant
Ristorante



Hotel
Hotel



- 100x100 cm
- 20x120 cm
- 120x120 cm
- 60x120 cm
- 120x240 cm
- 120x300 cm
- 140x310 cm
- 140x320 cm

COLLECTION



CEMENT	16
ETERNO	18
CEMENTO	26
FERROCIMENTO	32
VELLUTO	38
CASSERO	48
LOFT	54
BETONITE	60
CEMENTO CALMO	66
VALENTINO	72

MARBLE	78
TIFFANY	80
CALACATTA PALAZZO	86
CALACATTA CARMEN	88
TERRABIANCA	94
OPAL MONTE BIANCO	98
DELPHUS	102
CANYON	106
ONYX	110
DEMETRIA	114
ALPI	118
MONTE NERO	122
PALISSANDRO	126
RIVER	130

COLLECTION



WOOD & FABRIC 134

TRAME 136

BAITA 142

DECAPÉ 146

VINTAGE WOOD 150

STONE 154

VOLCAMONICA 156

MARQUINA 162

FASHION STONE 166

PIRITE ORO 168

INDUSTRIA 172

BELVEDERE 176

PLATINIUM 182

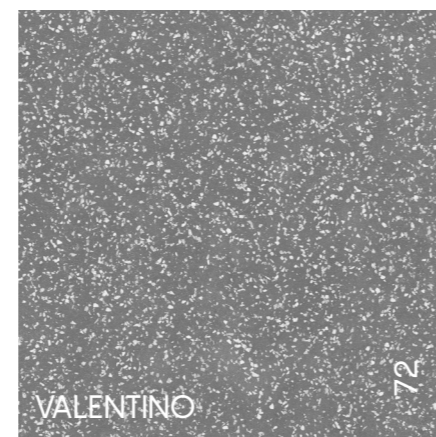
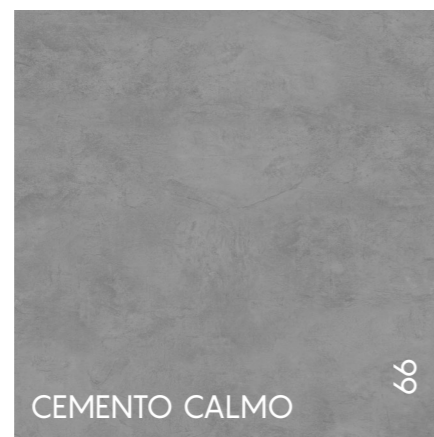
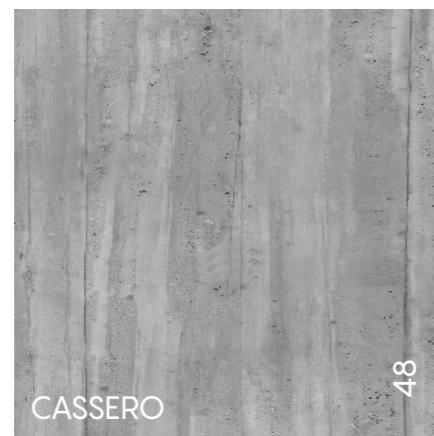
TRENTINO 188

PRESIDENT 194

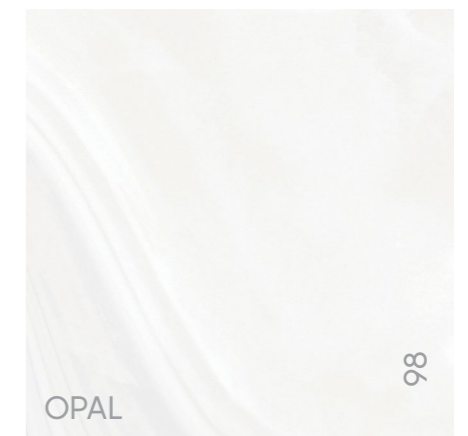
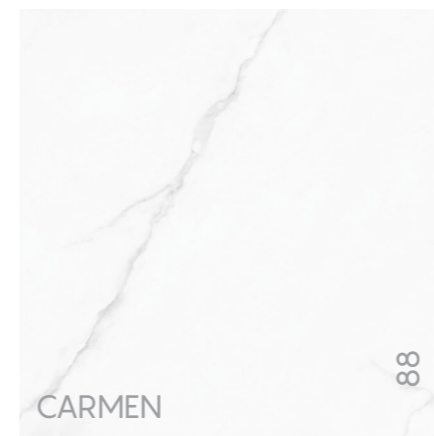
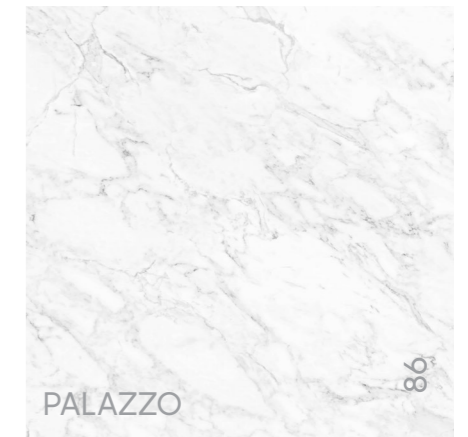
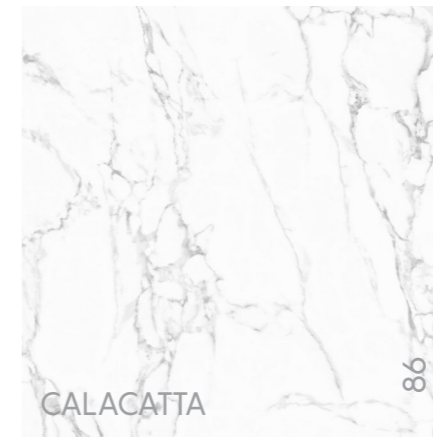
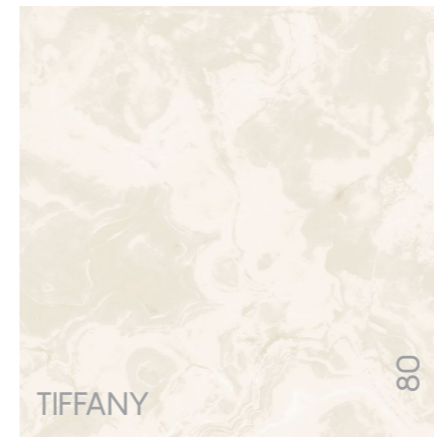
GAYA 200

IRISH GREEN 206

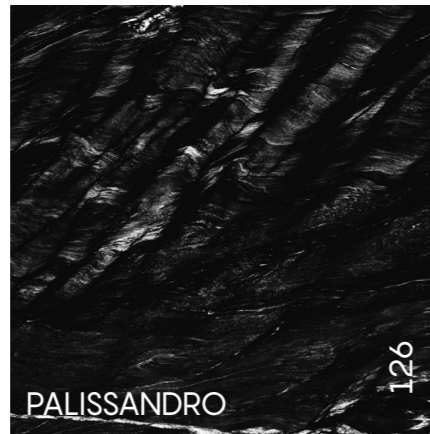
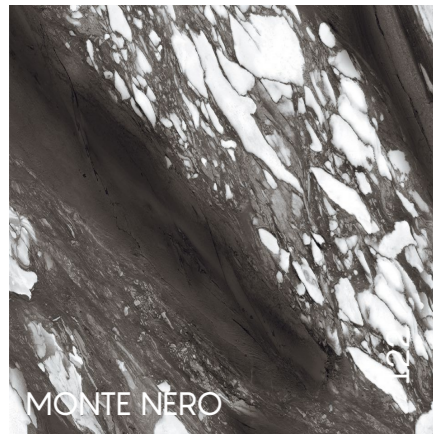
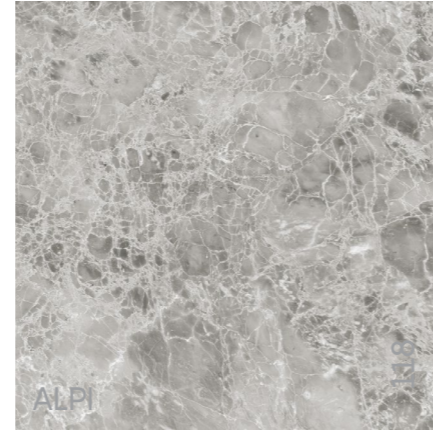
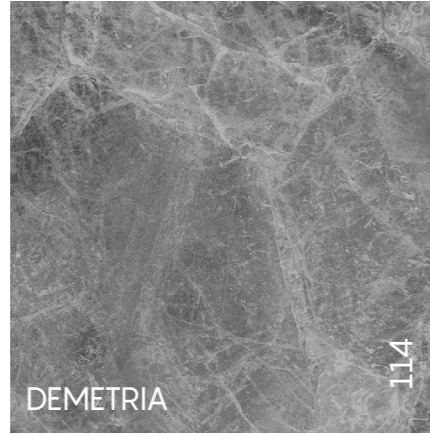
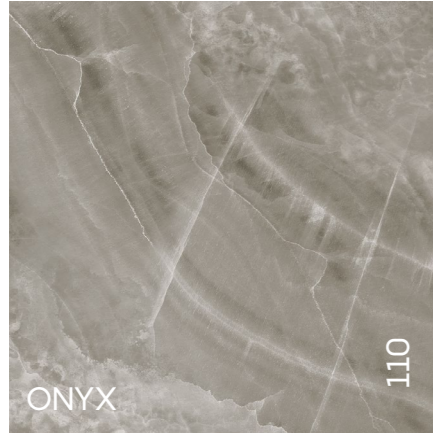
CEMENT COLLECTION



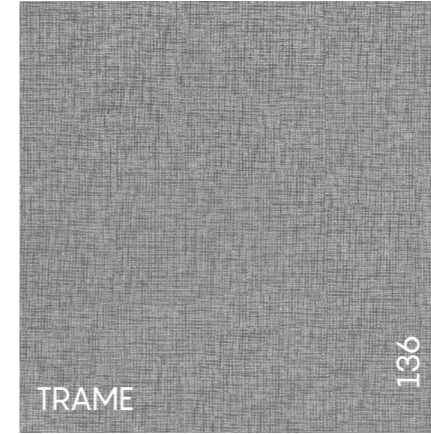
MARBLE COLLECTION



MARBLE COLLECTION



WOOD & FABRIC COLLECTION

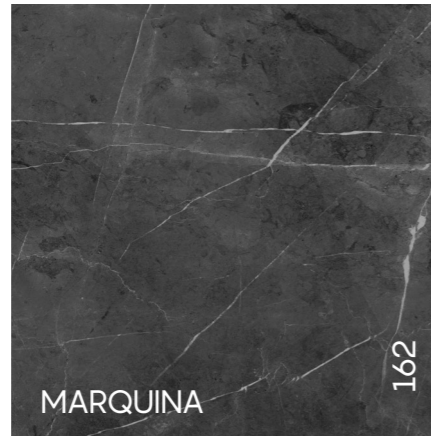


STONE COLLECTION



VOLCAMONICA

156



MARQUINA

162

FASHION STONE COLLECTION



PIRITE ORO

168



INDUSTRIA

172



BELVEDERE

176



PLATINIUM

182



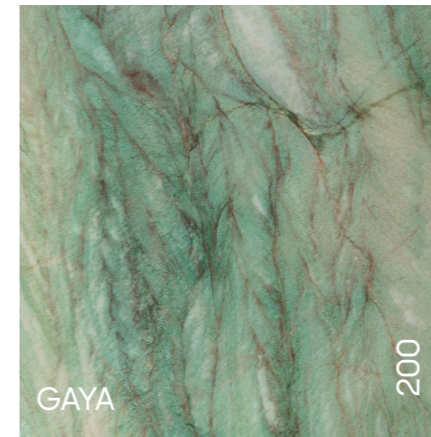
TRENTINO

188



PRESIDENT

194



GAYA

200



IRISH GREEN

206

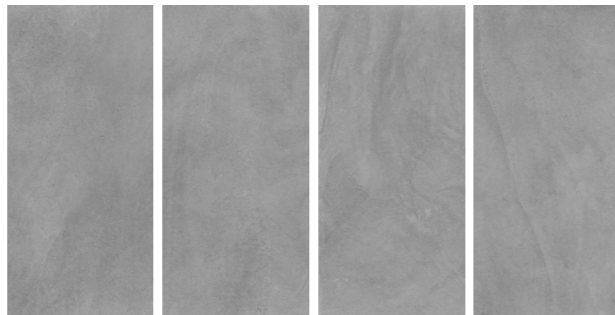
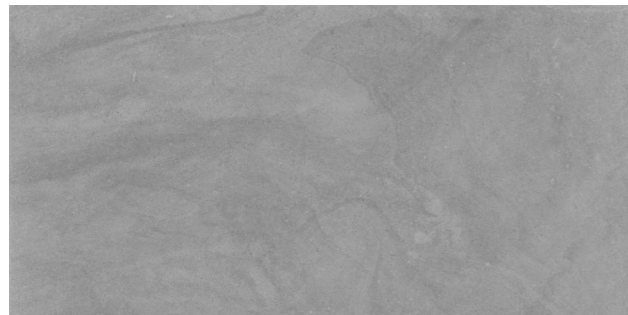


CEMENT

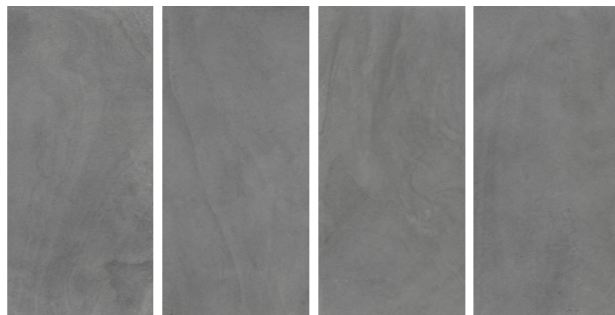
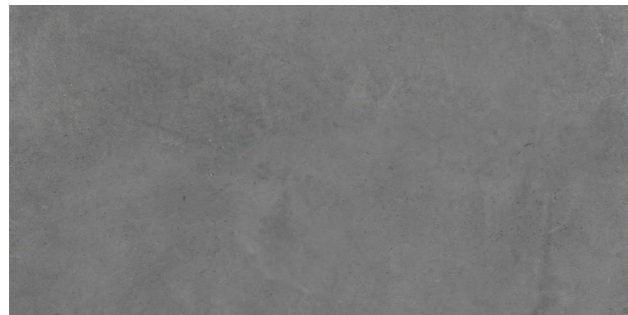
ETERNO	18
CEMENTO	26
FERROCEMENTO	32
VELLUTO	38
CASSERO	48
LOFT	54
BETONITE	60
CEMENTO CALMO	66
VALENTINO	72

ETERNO

60x120cm



Light Grey
Matt - Code: 9266



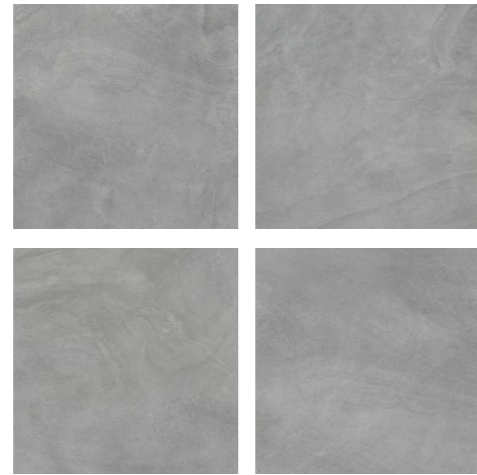
Grey
Matt - Code: 9267



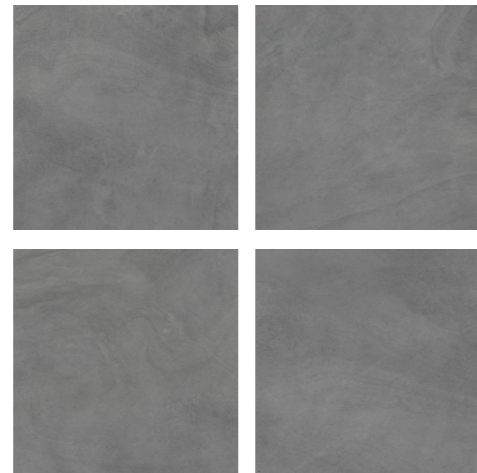
Dark Grey
Matt - Code: 9268



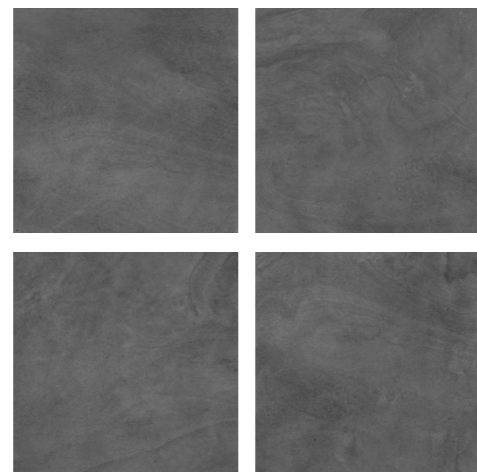
ETERNO



Light Grey
Matt - Code: 9320



Grey
Matt - Code: 9321



Dark Grey
Matt - Code: 9322



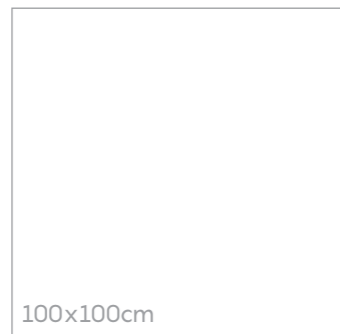
ETERNO

ETERNO gives style and simplicity to the design with an impression of peace and good order at every step. It's perfect for fulfilling the potential of many locations and contexts from indoors to outdoors. The forceful style of the concrete look gives character to a living-room or the main dining-room of a restaurant, and denotes cleanliness and modernity.

La collezione Betonite assicura stile e semplicità agli spazi suscitando idee di pace e ordine a ogni passo. Si tratta di una collezione perfetta per riempire ambienti interni ed esterni all'edificio. Lo stile potente del cemento dona carattere agli ambienti di una residenza, alle sale di un ristorante e rimarca pulizia e modernità allo stesso tempo.



60x120cm



100x100cm



CEMENTO

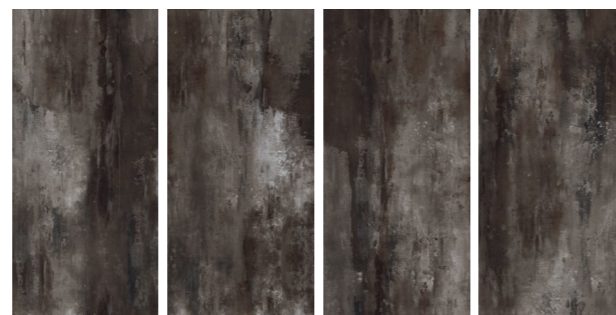
60x120cm



Light
Matt - Code: 9120
Polished - Code: 9135



Medium
Matt - Code: 9121
Polished - code: 9136



Dark
Polished - Code: 9137



CEMENTO

The CEMENTO collection is inspired by new urban contexts and contemporary architectural trends. Combinations of cement and concrete, the patina of rusted metals with alternating chiaroscuro hues with vintage moods that are ideal for giving residential spaces a personal touch; or for creating turnkey solutions for commercial applications for contemporary areas with a dynamic characters. The tiles come in two sizes (60x120 , 30x90) and shades in matt alternative and 60x120 in 3 shades of glossy reflection.

La collezione cemento è ispirata dai nuovi contesti urbani e dai trend architettonici contemporanei. Combinazioni di cemento e calcestruzzo, la patina dei metalli arrugginiti con un'alternanza di tonalità chiaroscuro con mood vitage che sono ideali per dare agli spazi residenziali un tocco personale; o per creare soluzioni chiavi in mano per applicazioni commerciali per aree contemporanee con caratteri dinamici. Vi sono due misure di piastrelle (60x120, 30x90) e tre sfumature opache alternative e 60x120 in 3 sfumature lucide.

60x120cm





Cemento - Light - Matt



Cemento - Medium - Matt

FERROCEMENTO

60x120cm



11.4 mm



Light Grey
Matt - Code: 9240
Polished - Code: 9188



Grey
Matt - Code: 9239
Polished - code: 9180



Brown
Matt - Code: 9237
Polished - Code: 9178

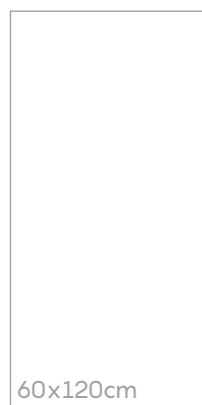


FERROCEMENTO - GREY - POLISHED

FERROCEMENTO

When iron and cement come together, there are often post-industrial atmospheres of vintage as well as modern charm. In this case, the reinterpretation of this combination suggests a dynamic approach to the environment where the decorated ceramics become an element of decoration and characterization commercial as well as other environments.

Quando il ferro ed il cemento si incontrano nascono spesso atmosfere post industriali di un fascino vintage ma anche molto attuale. In questo caso la rivisitazione di questo binomio suggerisce un approccio dinamico dell'ambiente dove la ceramica così decorata diventa essa stesso elemento di decoro e caratterizzazione di ambienti commerciali e non solo.



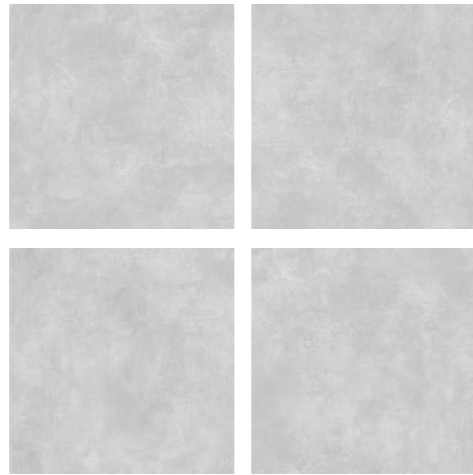
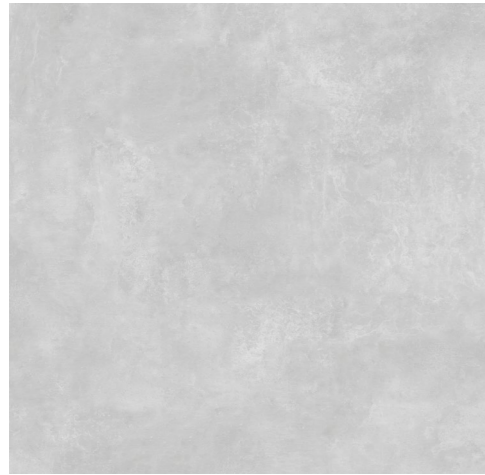
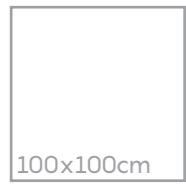


Ferrocemento - Brown - Matt

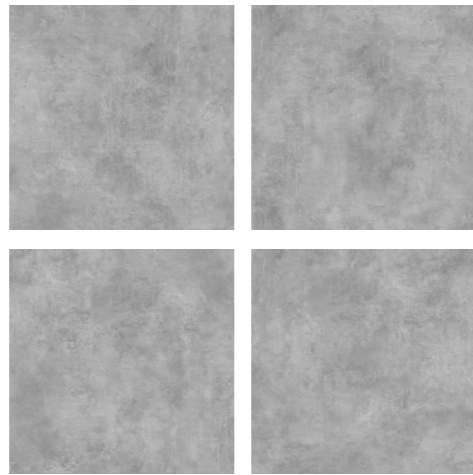
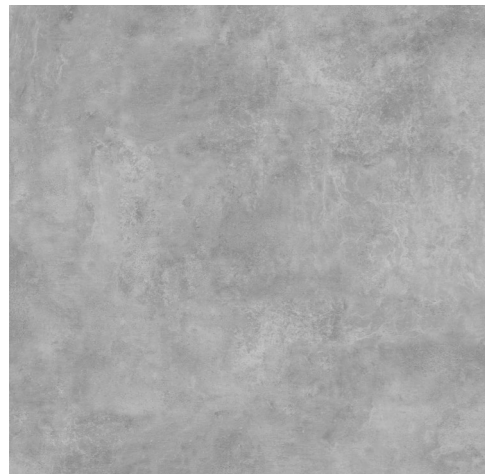


Ferrocemento - Light - Matt

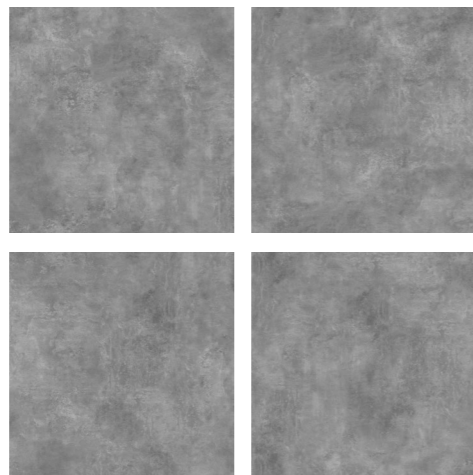
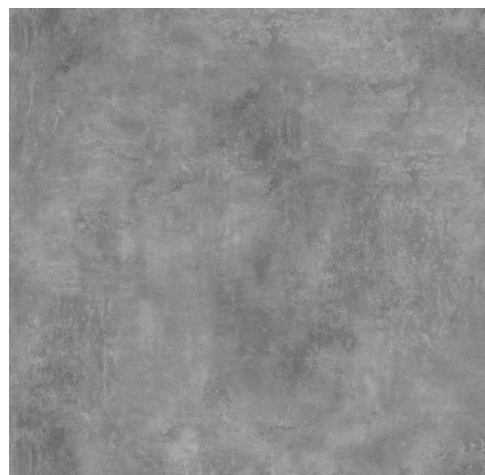
VELLUTO



Light Grey
Matt - Code: 9144



Grey
Matt - Code: 9143



Dark Grey
Matt - Code: 9142



VELLUTO

60x120cm



11.4 mm



Light Grey
Matt - Code: 9144
Polished - Code: 9154



Light Grey
Ardesia- Code: 9149



Grey
Matt - Code: 9143
Polished - code: 9153



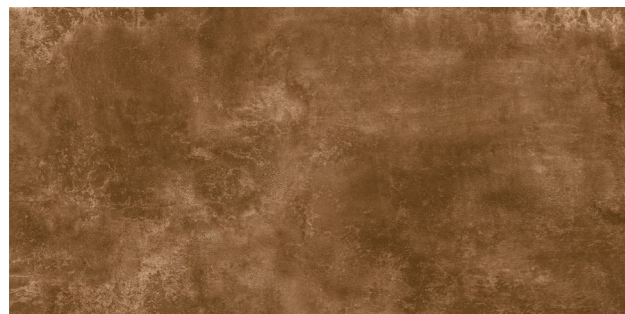
Grey
Ardesia- Code: 9148



Dark Grey
Matt - Code: 9142
Polished - Code: 9152



Dark Grey
Ardesia- Code: 9147



Brown
Matt - Code: 9140
Polished - Code: 9150



Brown
Ardesia- Code: 9145



Beige
Matt - Code: 9253
Polished - Code: 9254



Beige
Ardesia- Code: 9255

VELLUTO - GREY - MATT



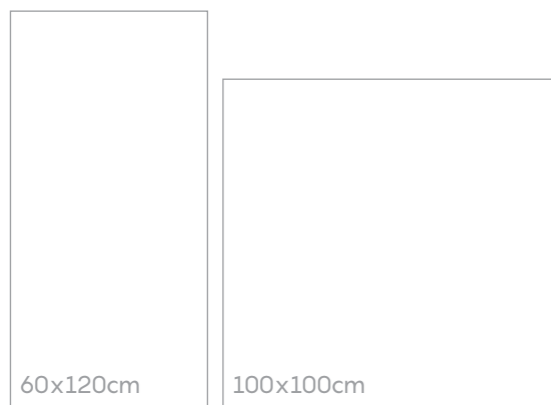
VELLUTO ARDESIA - GREY



VELLUTO

The hallmark feature of the collection is an original sensation of softness that helps establish a smooth, continuous surface on which matt and glossy reflections alternate. VELLUTO is available in five innovation color options, these 60x120 rectified tiles accentuate high tech modernism through ceramic interpretation. You can have them in Ardesia (slate) option as well. This collection is suitable both for the most sophisticated of residential interiors and for modern prestigious commercial premises.

La caratteristica principale della collezione è un'originale sensazione di delicatezza che aiuta ad instaurare una superficie liscia e continua dove i riflessi opachi e lucidi si alternano. VELLUTO è disponibile in 5 colori opzionali innovativi queste piastrelle 60x120 rettificate accentuano il modernismo high-tech tramite un'interpretazione della ceramica. Sono inoltre disponibili in Ardesia. Questa collezione è adatta sia per la maggiorparte degli interni residenziali che per prestigiosi locali commerciali.



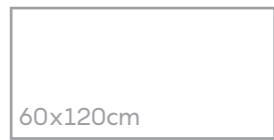


Velluto - Brown - Matt



Velluto - Light - Matt

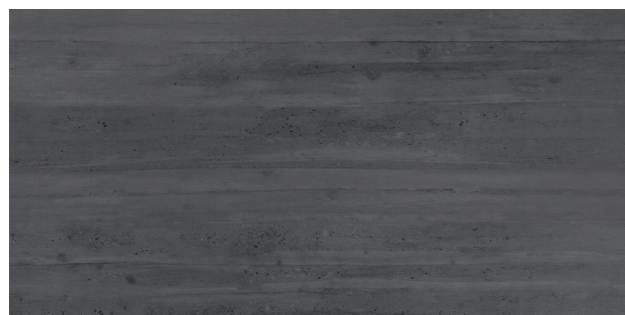
CASSERO



Light Grey
Matt - Code: 9226



Grey
Matt - Code: 9225



Dark Grey
Matt - Code: 9224



CASSERO

Sometimes the roughness of public works can become an extremely original element for ceramic decorations. In this case, Cassero resumed the reinforced concrete structures in their most shipbuilding aspect with the importance of the imprints left by the wood that contains it. This ceramic solution is used mainly in the façade to achieve a very modern and timeless design.

A volte la grossolanità delle opere pubbliche può diventare un elemento estremamente originale per decorazioni ceramiche. In questo caso Cassero riprende le strutture di cemento armato nel loro aspetto più cantieristico con la rilevanza delle impronte lasciate dal legno che lo contiene. In questo modo la possibilità di utilizzo soprattutto a facciata rende questa soluzione ceramica molto attuale e moderna e sicuramente mai banale.



60x120cm



Cassero - Grey - Matt



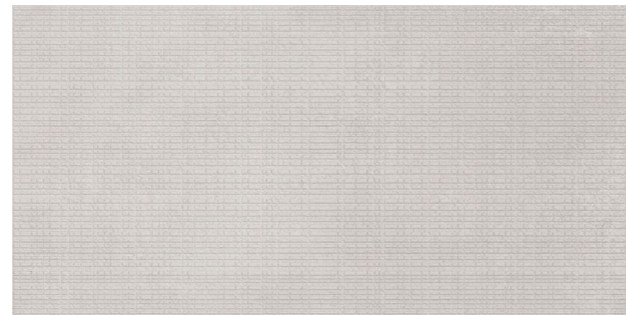
Cassero - Light Grey - Matt

LOFT

60x120cm



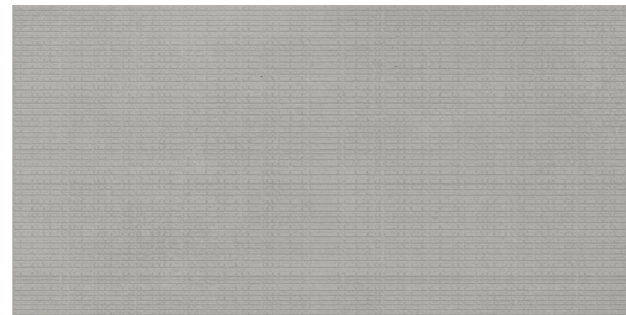
Light Grey
Matt - Code: 9243



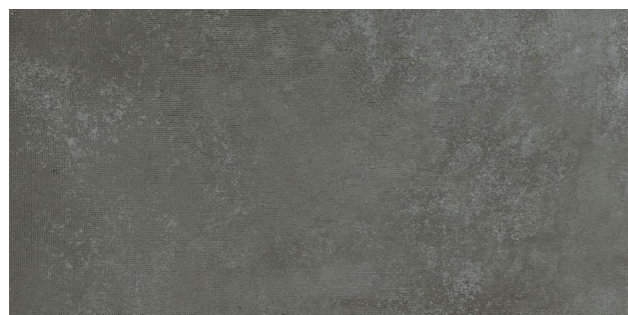
Light Grey - Rotaia
Matt - Code: 9249



Grey
Matt - Code: 9242



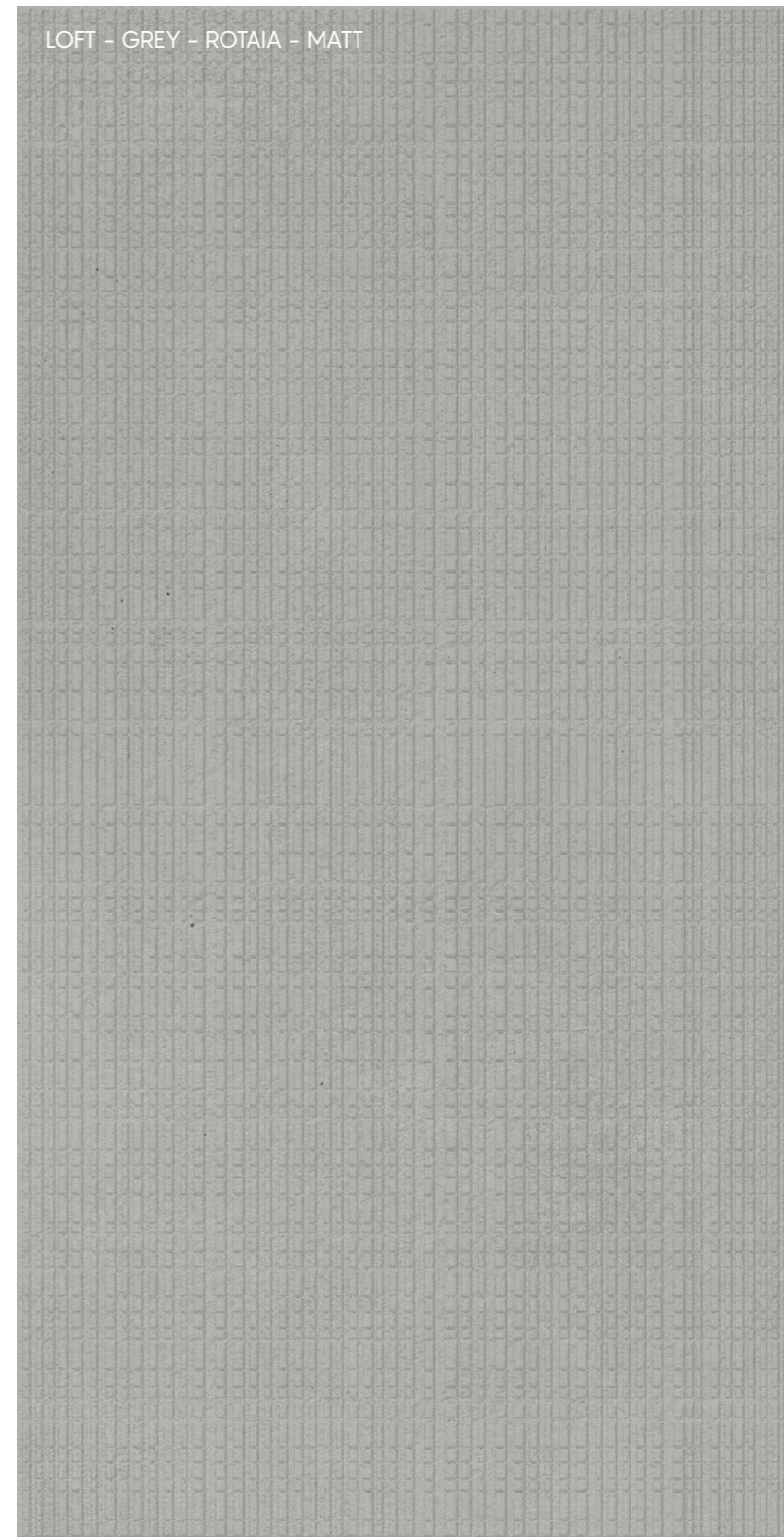
Grey - Rotaia
Matt - Code: 9248



Dark Grey
Matt - Code: 9241



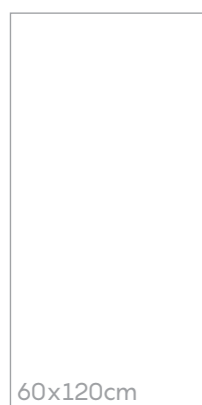
Dark Grey - Rotaia
Matt - Code: 9247



LOFT

The cement from poor industrial material as it is transformed into this collection as a sophisticated and unpredictable material. The differences in the structure and color shades of this product, give the cement a more suitable look for the realization of modern environments. The relevance of this product and its complexity make it suitable for commercial, as well as trendy residential uses

Il cemento da materiale povero e industriale come è si trasforma in questa collezione come materiale sofisticato e imprevedibile. Le differenze nella struttura e nelle sfumature cromatiche di questo prodotto, conferiscono al cemento una veste più idonea alla realizzazione di ambienti moderni sempre più esigenti. L'attualità di questo prodotto e la sua complessità lo rendono adatto per utilizzazioni commerciali, ma anche residenziali di tendenza.



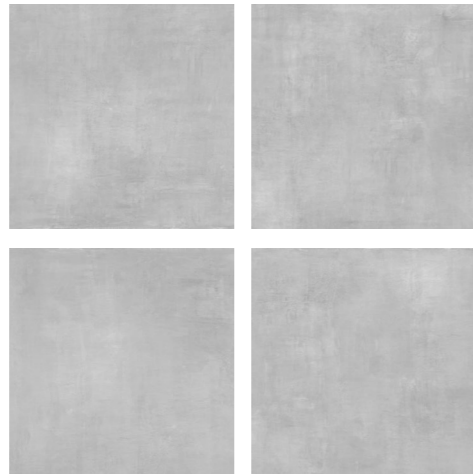
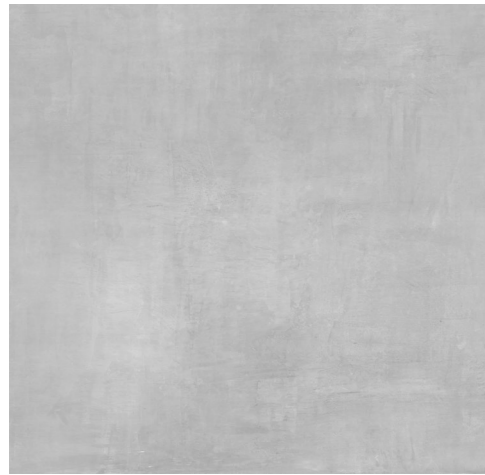
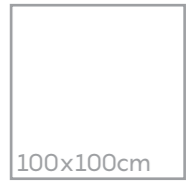


Loft - Dark Grey - Matt

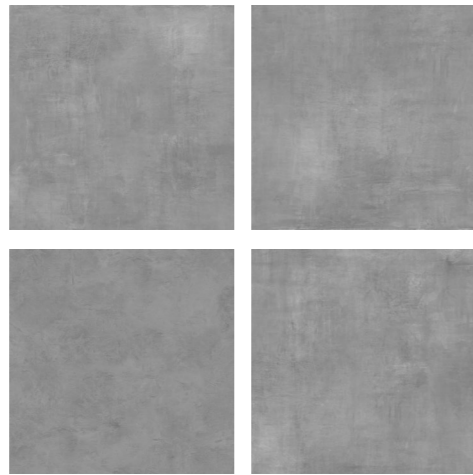
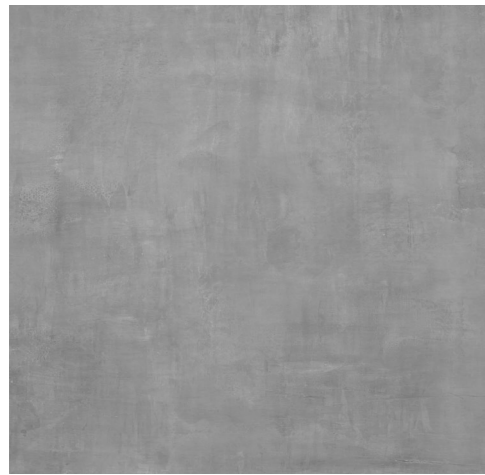


Loft - Grey-Rotajid - Matt

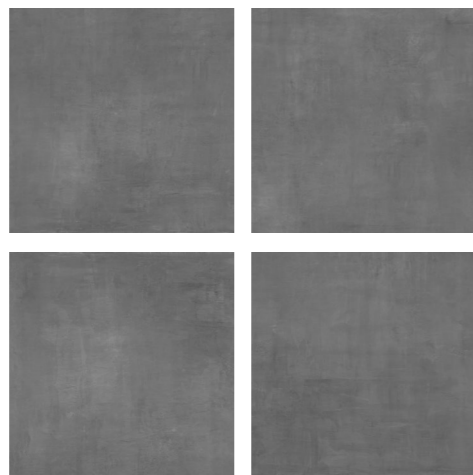
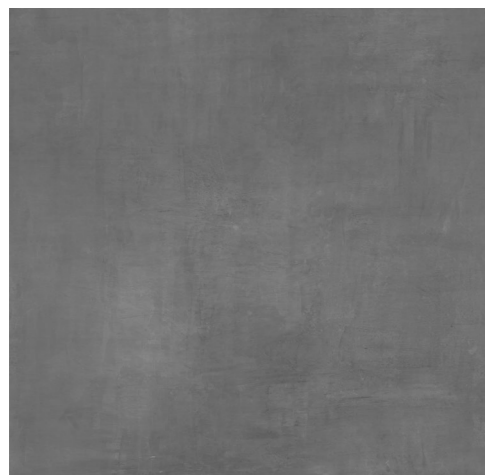
BETONITE



Light Grey
Matt - Code: 9285



Grey
Matt - Code: 9286



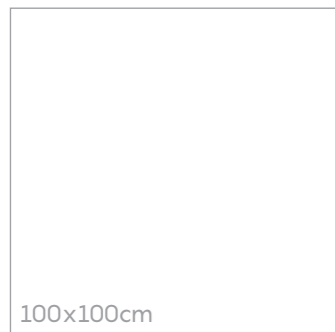
Dark Grey
Matt - Code: 9287



BETONITE

BETONITE gives style and simplicity to the design with an impression of peace and good order at every step. It's perfect for fulfilling the potential of many locations and contexts from indoors to outdoors. The forceful style of the concrete look gives character to a living-room or the main dining-room of a restaurant, and denotes cleanliness and modernity. The surface texture of concrete-effect porcelain stoneware tiles is definitely one of the most versatile, and can provide perfect continuity between different areas.

La collezione Betonite assicura stile e semplicità agli spazi suscitando idee di pace e ordine a ogni passo. Si tratta di una collezione perfetta per riempire ambienti interni ed esterni all'edificio. Lo stile potente del cemento dona carattere agli ambienti di una residenza, alle sale di un ristorante e rimarca pulizia e modernità allo stesso tempo. La superficie di questo cemento ceramico è indubbiamente uno dei più versatili e provvede a donare continuità tra differenti aree tra loro.



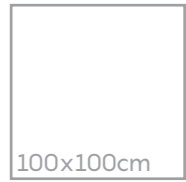


Betonite - Grey - Matt



Betonite -Light Grey- Matt

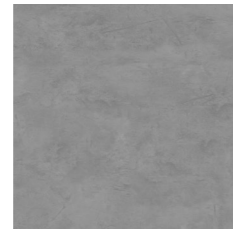
CEMENTO CALMO



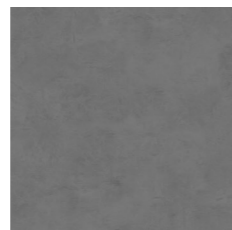
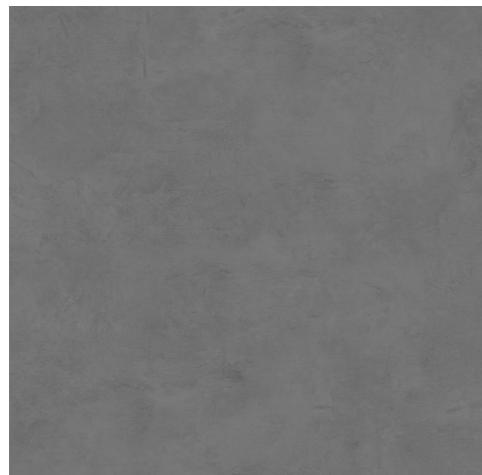
100x100cm



10 mm



Light Grey
Matt - Code: 9280



Grey
Matt - Code: 9281



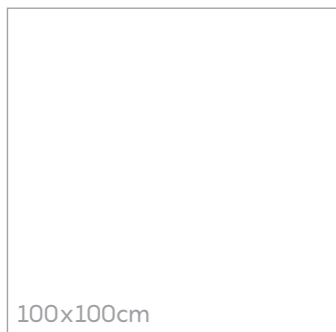
Dark Grey
Matt - Code: 9282



CEMENTO CALMO

Cemento Calmo is characterized by surfaces that are reminiscent of [plastered wall, or industrial cement]. A sensation of simplicity and great style, a soft appearance, one of the characteristics of this design. A suffused texture, just like a freshly plastered wall.

Cemento Calmo è caratterizzato da superfici che ricordano [muro intonacato, o cemento industriale]. Una sensazione di semplicità e grande stile, un aspetto morbido, una delle caratteristiche di questo design. Una texture soffusa, proprio come un muro appena intonacato.



CEMENTO CALMO

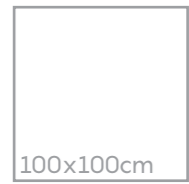


Cemento Calmo - Light Grey - Matt



Cemento Calmo - Grey - Matt

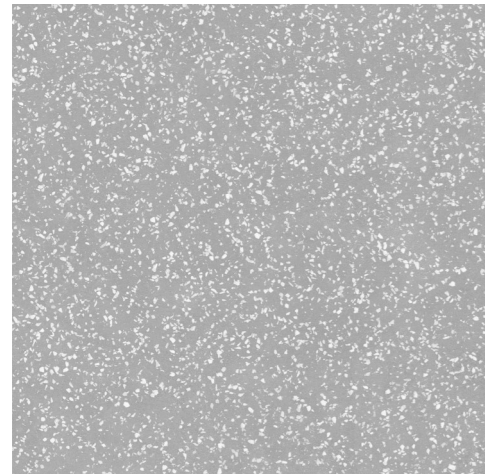
VALENTINO



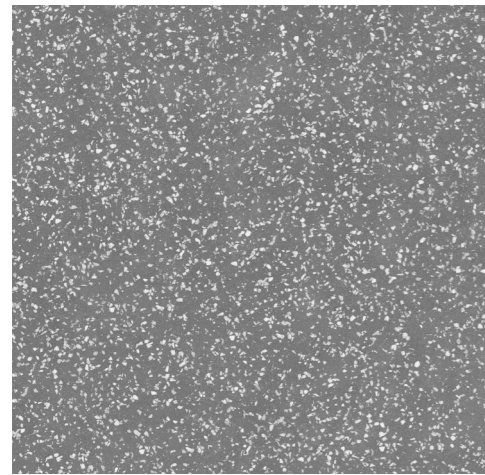
100x100cm



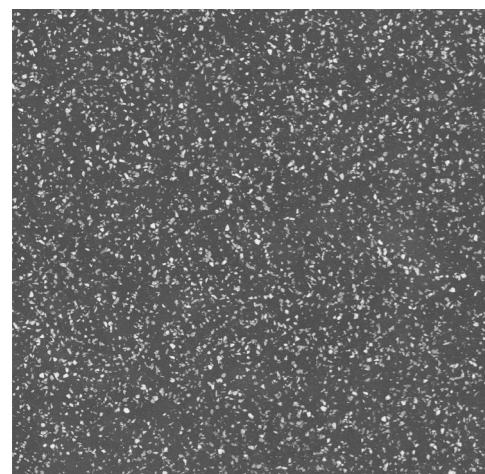
10 mm



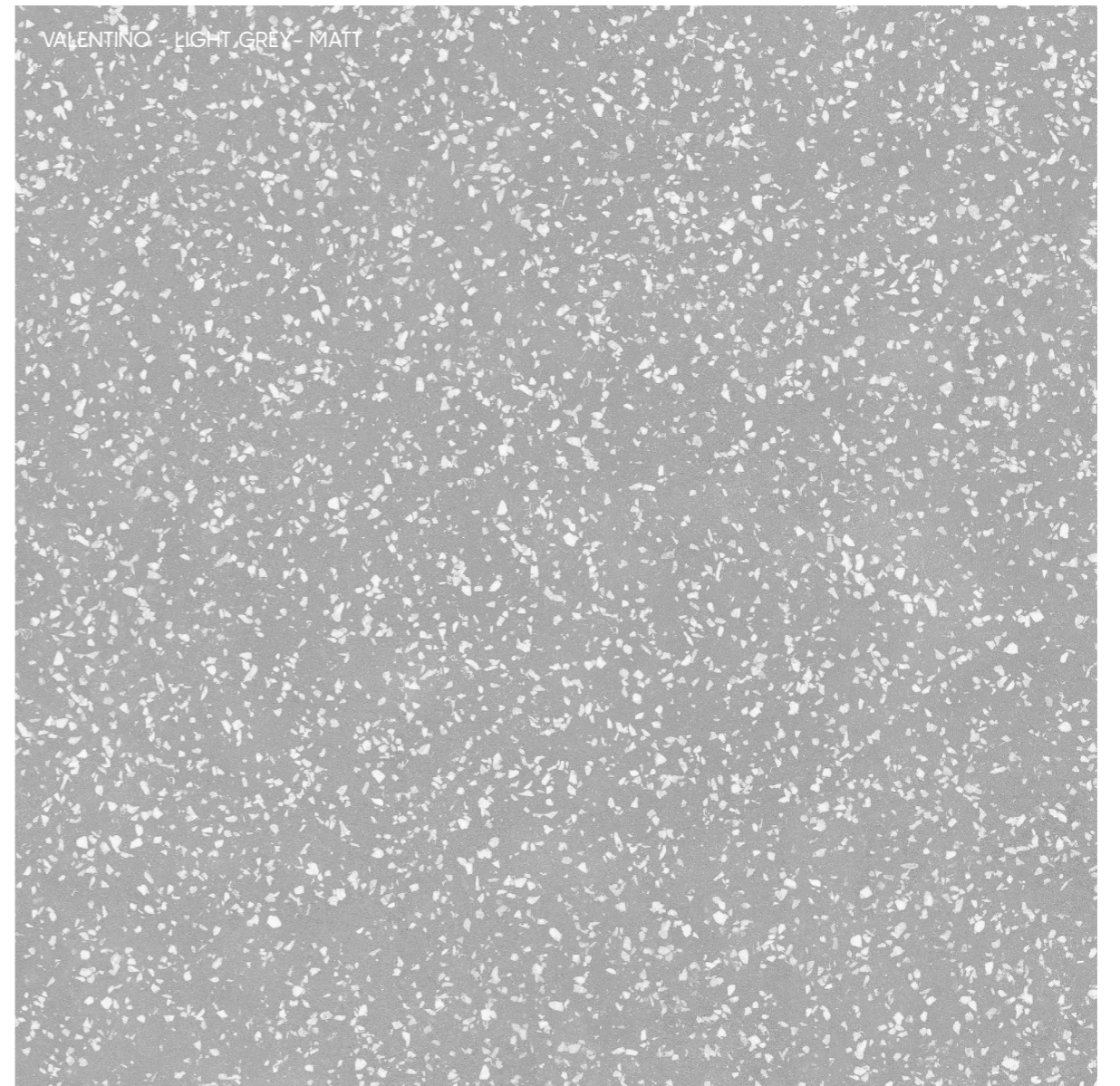
Light Grey
Matt - Code: 9293



Grey
Matt - Code: 9294



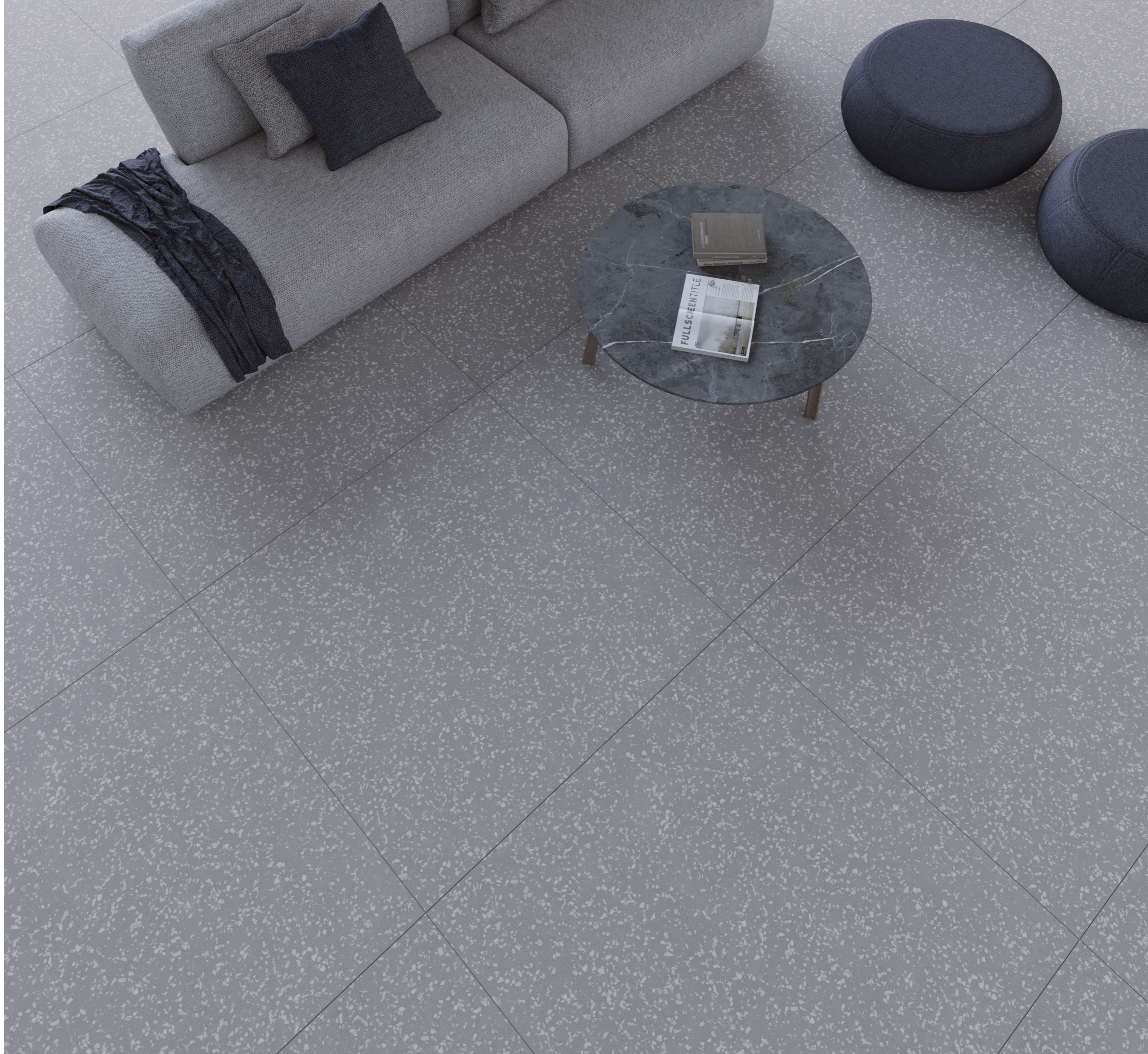
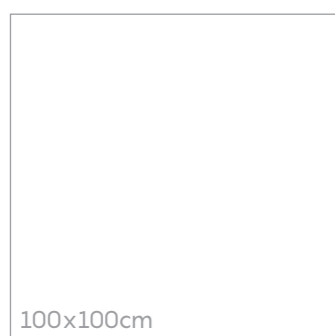
Dark Grey
Matt - Code: 9295



VALENTINO

VALENTINO is a modern inspiration of mosaic in a minimal pattern. It offers a striking style for the design of public and private interiors with its new architectural approaches. This design is available in three shades of grey, in matt finishes, in 100x100 format.

VALENTINO è un'ispirazione moderna del mosaico in un modello minimale. Offre uno stile sorprendente per la progettazione di interni pubblici e privati con i suoi nuovi approcci architettonici. Questo design è disponibile in tre tonalità di grigio, nelle finiture opache, nel formato 100x100.







MARBLE

TIFFANY	80
CALACATTA PALAZZO	86
CALACATTA CARMEN	88
TERRABIANCA	94
OPAL MONTE BIANCO	98
DELPHUS	102
CANYON	106
ONYX	110
DEMETRIA	114
ALPI	118
MONTE NERO	122
PALISSANDRO	126
RIVER	130

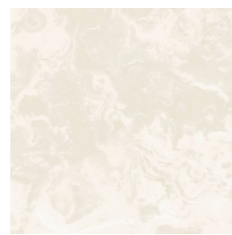
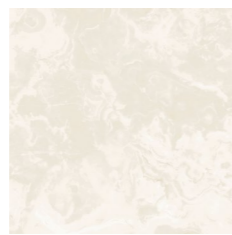
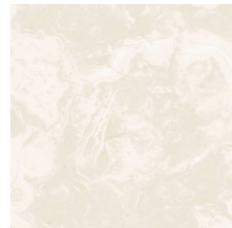
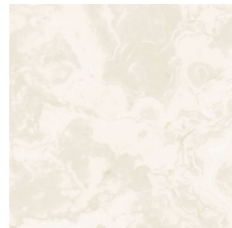
TIFFANY



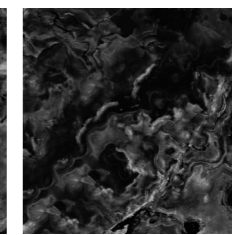
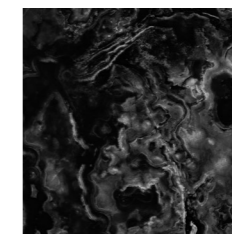
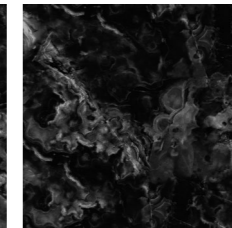
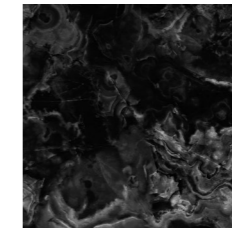
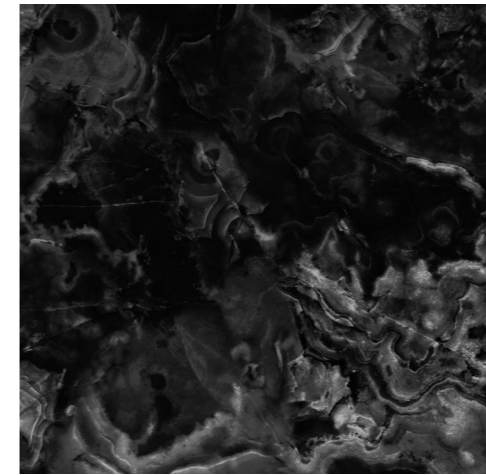
100x100cm



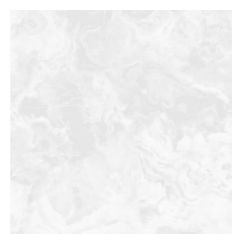
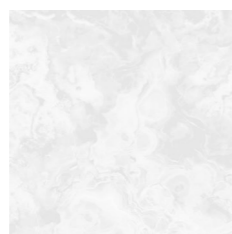
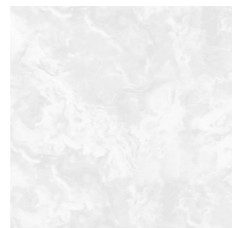
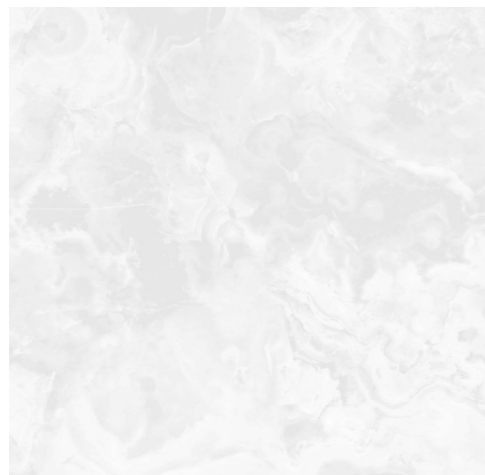
10 mm



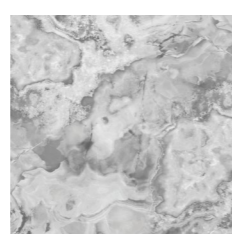
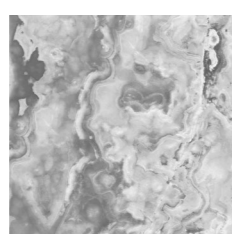
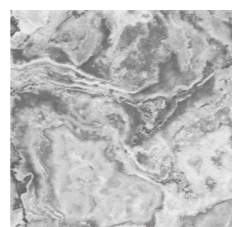
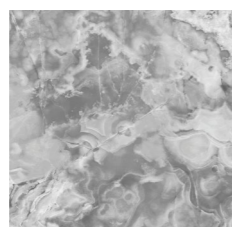
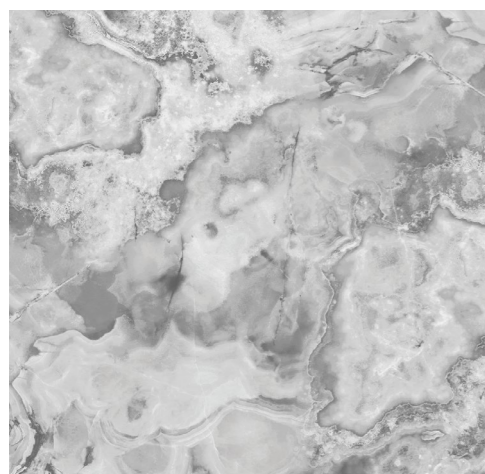
Gold
Polished - Code: 9306



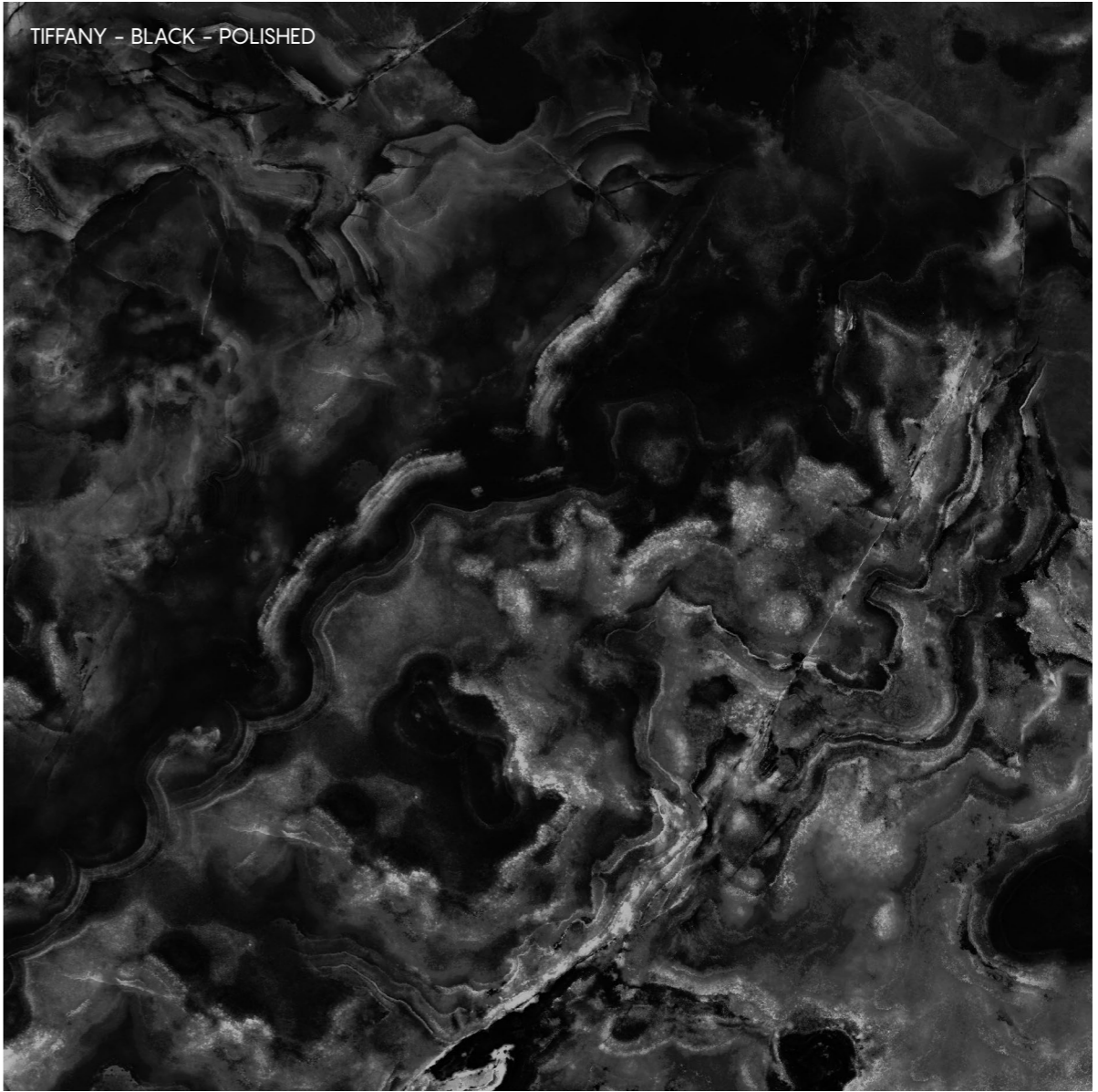
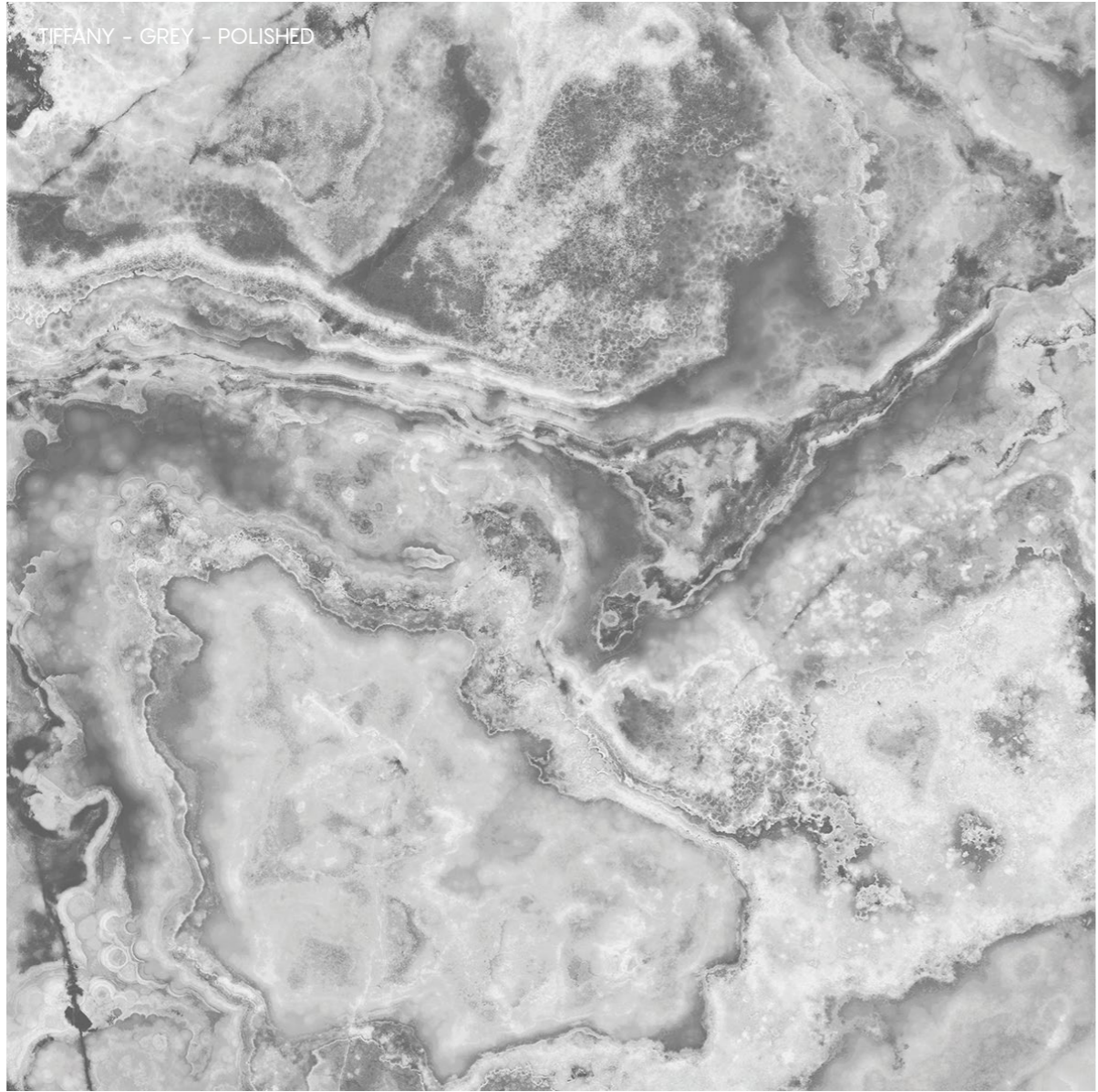
Black
Polished - Code: 9308



Silver
Polished - Code: 9307



Grey
Polished - Code: 9329





Tiffany - Silver - Polished



Tiffany - Black - Polished

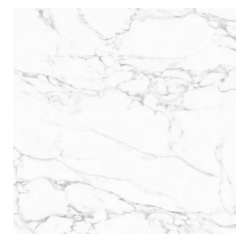
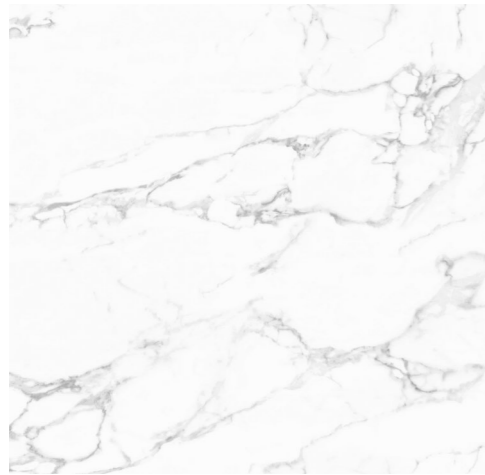
CALACATTA | PALAZZO



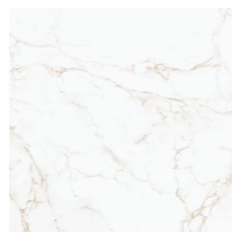
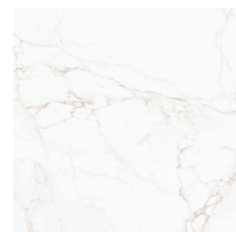
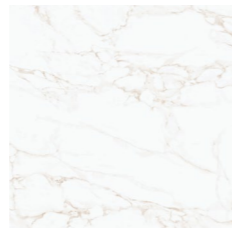
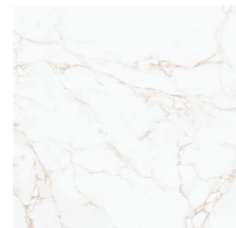
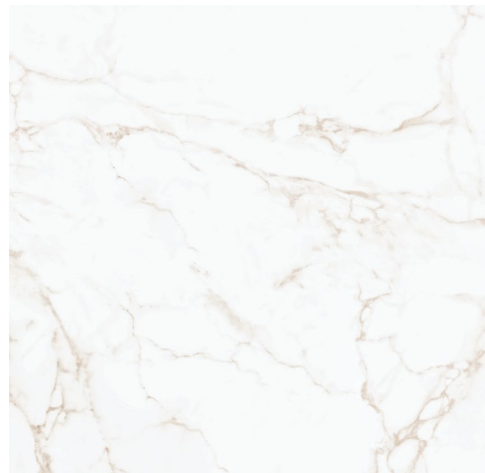
100x100cm



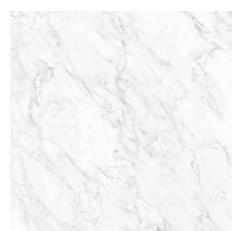
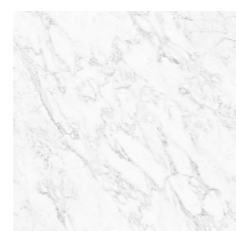
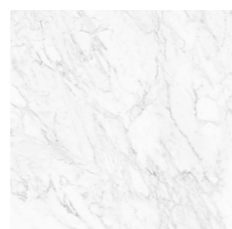
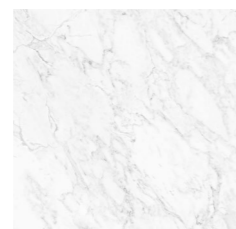
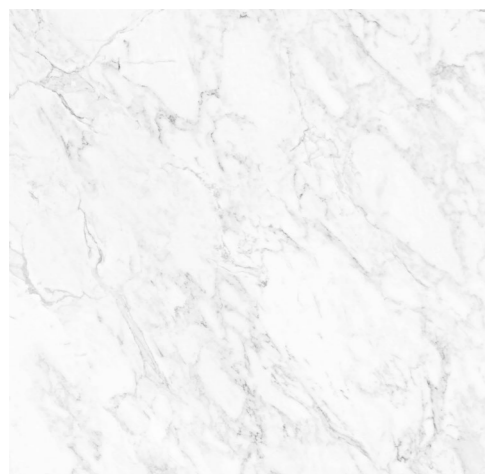
10 mm



Calacatta - Gery
Matt - Code: 9134
Polished - Code: 9304



Calacatta - Gold
Matt - Code: 9133
Polished - Code: 9303

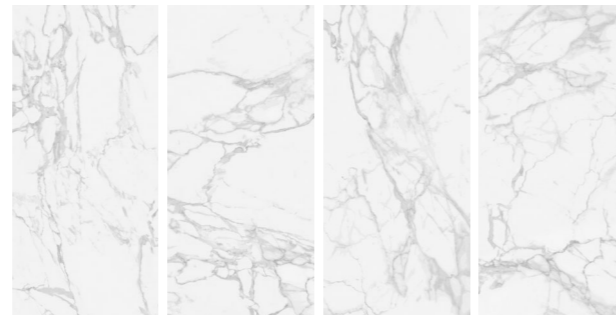


Palazzo
Polished - Code: 9309

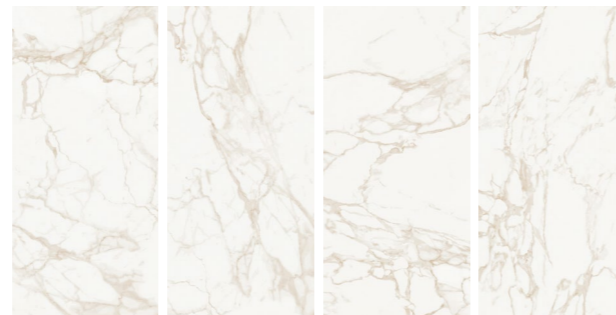


CALACATTA | CARMEN

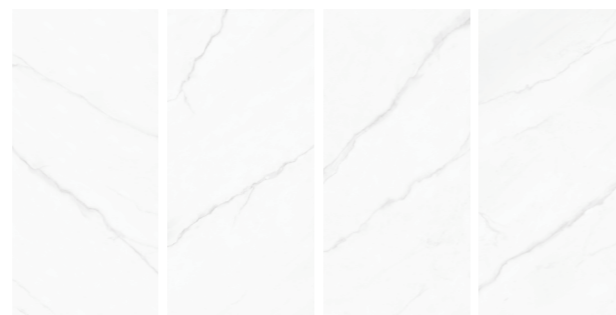
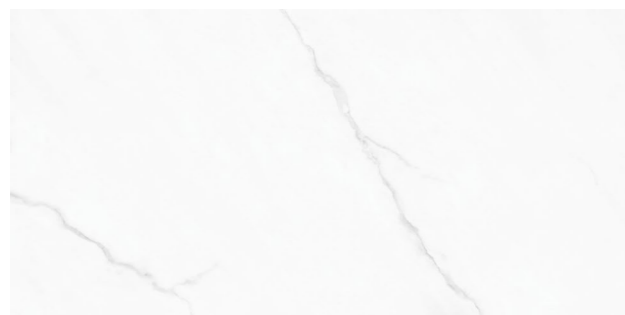
60x120cm



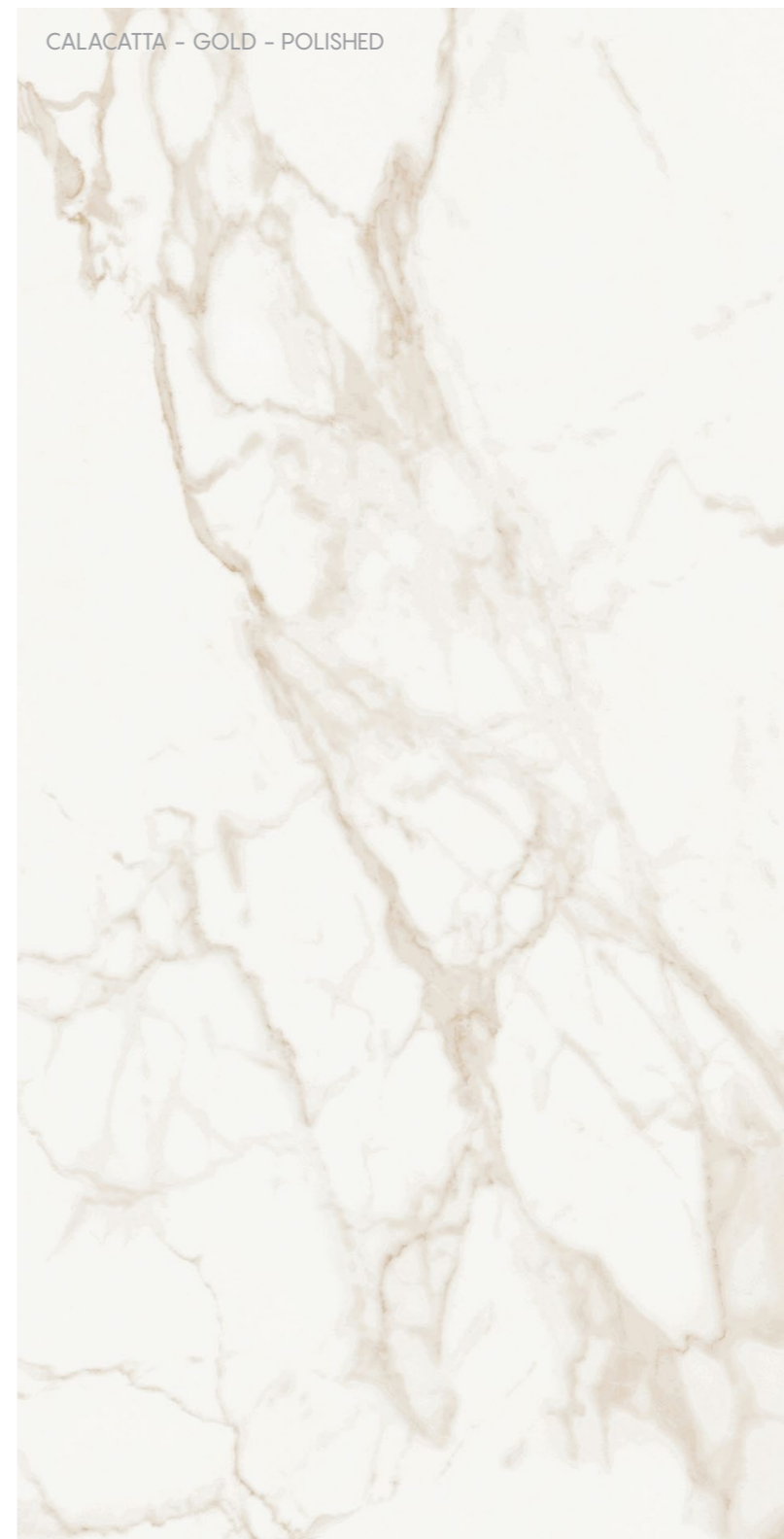
Calacatta - Grey
Matt - Code: 9134
Polished - code: 9129



Calacatta - Gold
Matt - Code: 9133
Polished - code: 9128



Carmen
Polished - Code: 9116



CALACATTA - GOLD - POLISHED



Palazzo - Polished



Calacatta - Gold - Polished

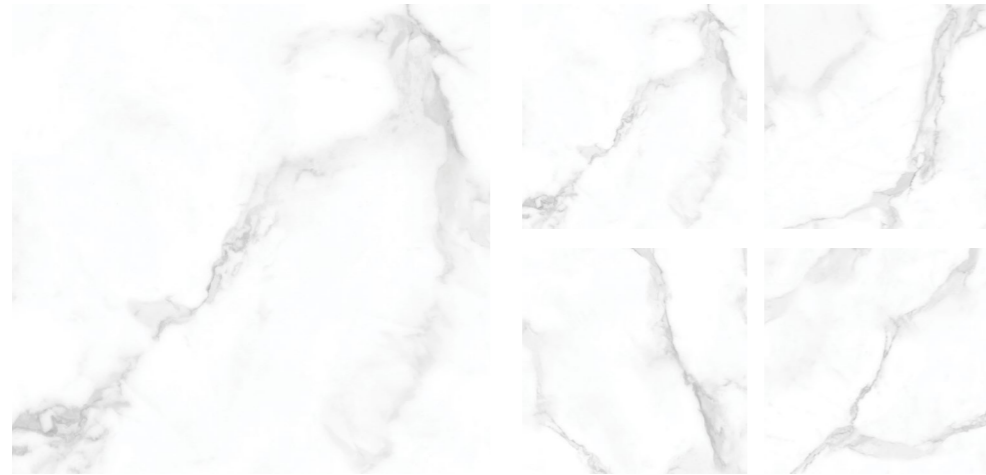
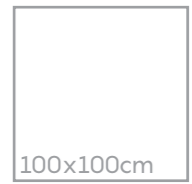


Calacatta - Gold - Polished



Carmen- Polished

TERRABIANCA



Terrabiaca - Grey
Matt - Code: 9134
Polished - Code: 9304





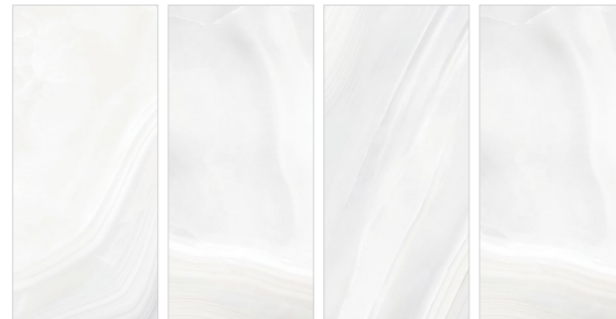
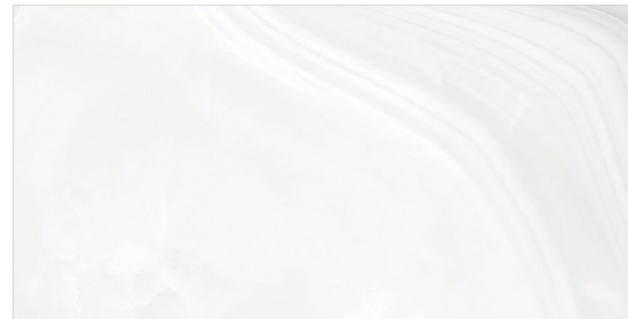
Terrabianca - Matt



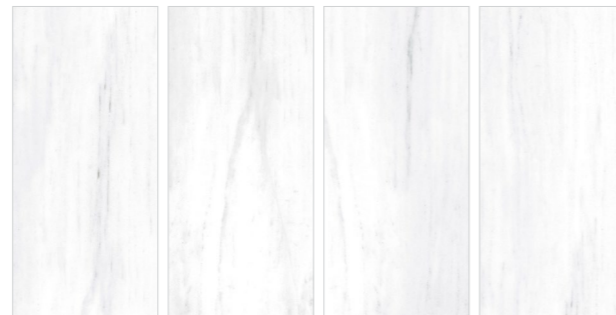
Terrabianca - Grey - Polished

OPAL | MONTE BIANCO

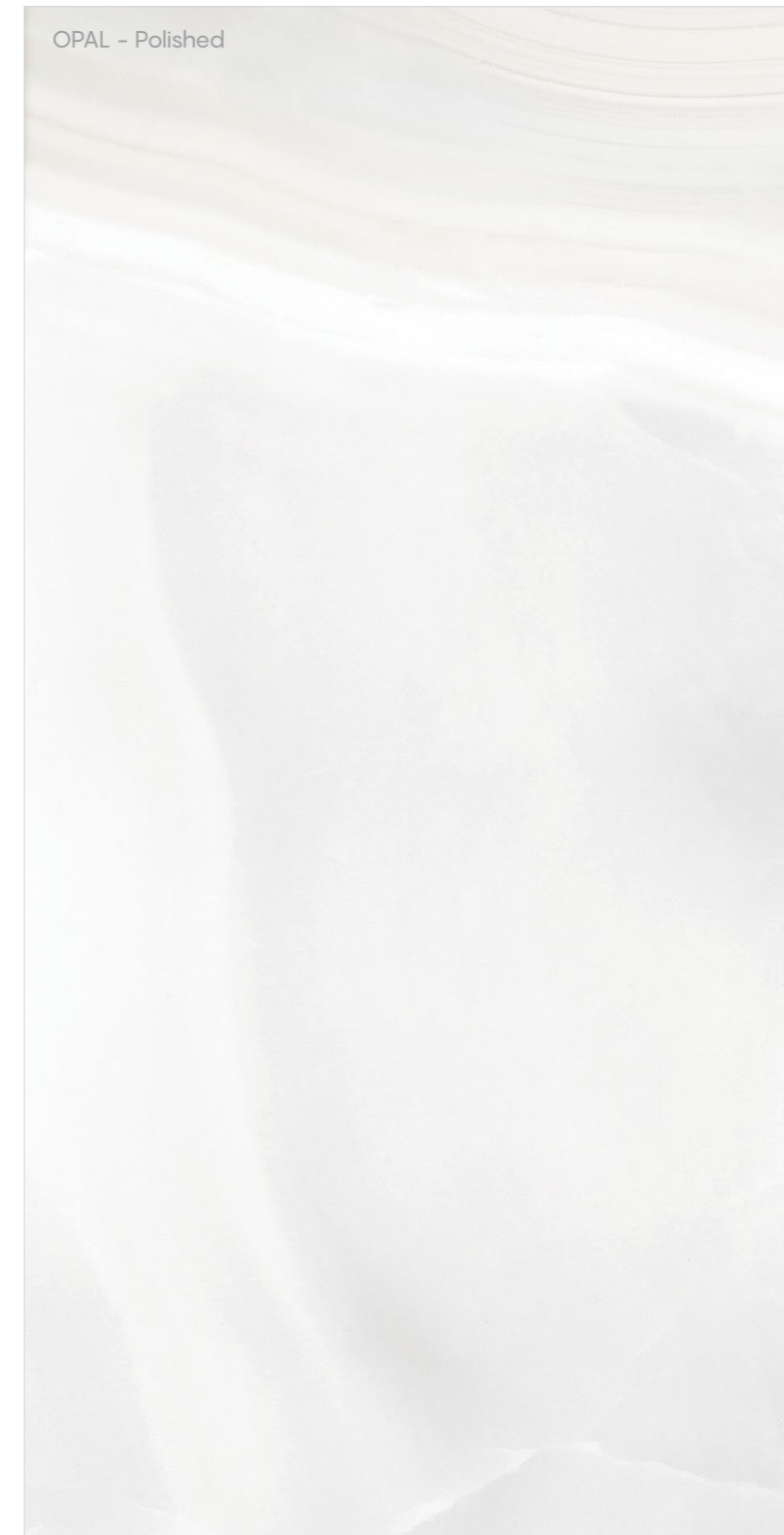
60x120cm



Opal
Matt - Code: 9182
Polished - Code: 9127



Monte Bianco
Matt - Code: 9199
Polished - Code: 9172

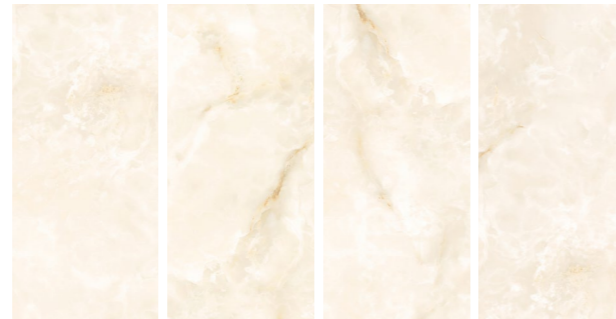
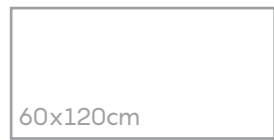


OPAL - Polished

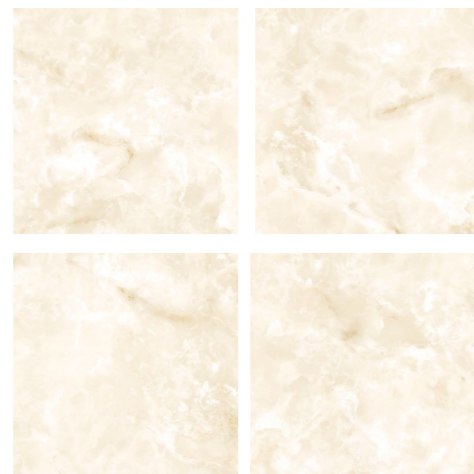
OPAL | MONTE BIANCO



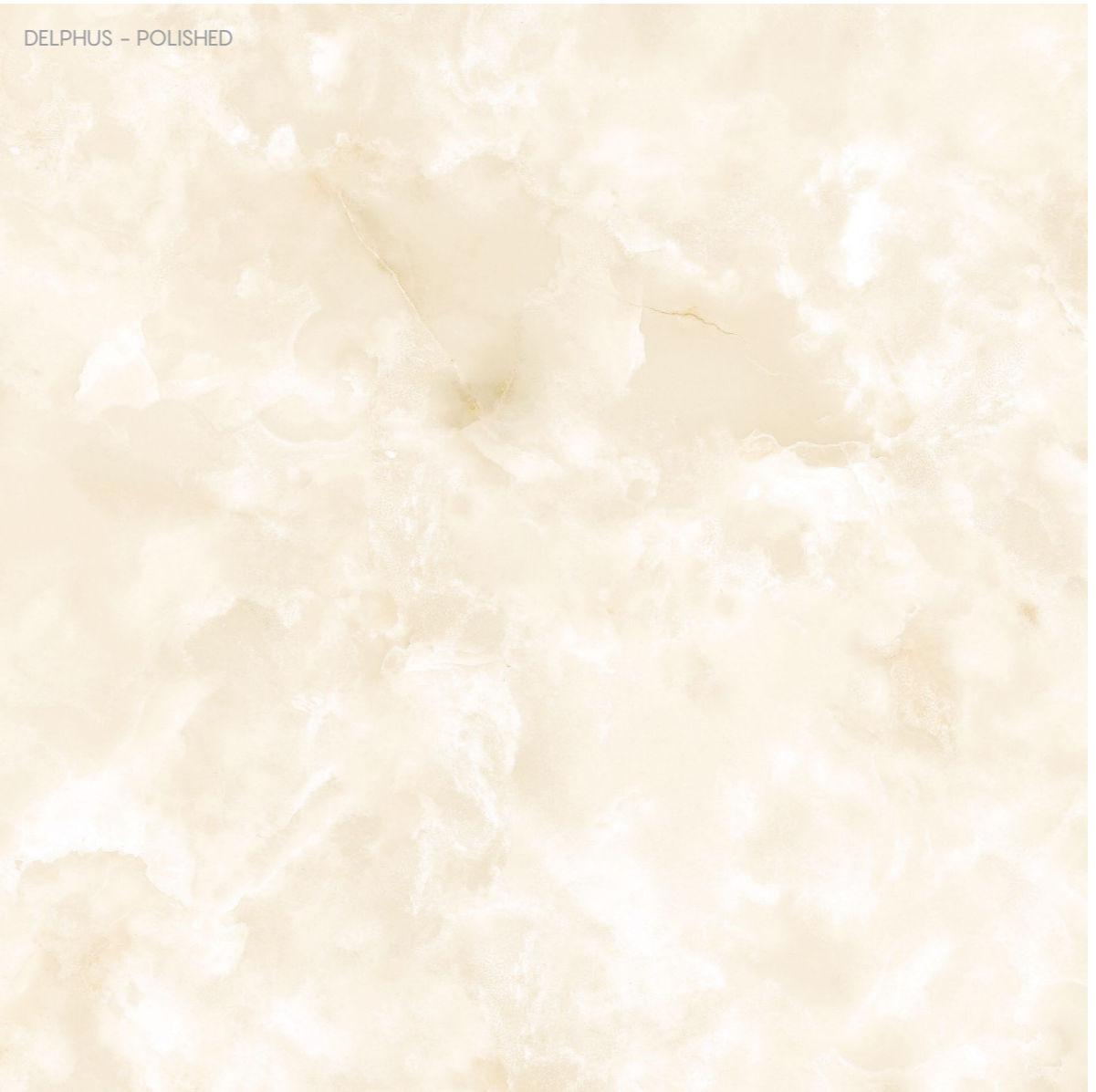
DELPHUS



Matt - Code: 9181
Polished - Code: 9125



Matt - Code: 9299
Polished - Code: 9305



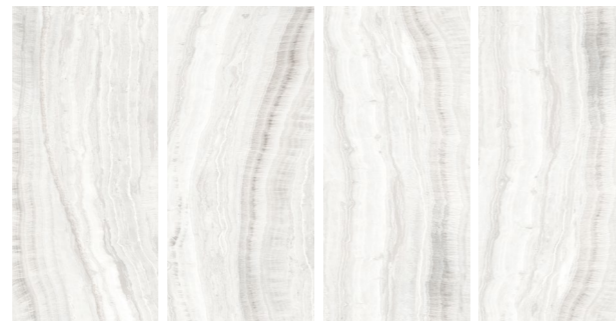


CANYON

60x120cm



White
Polished - Code: 9185



Beige
Polished - Code: 9184





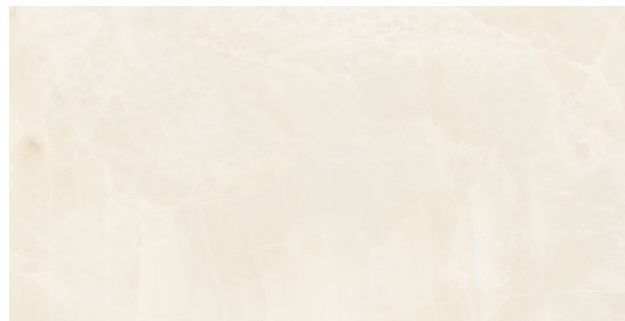
Canyon - White - Polished



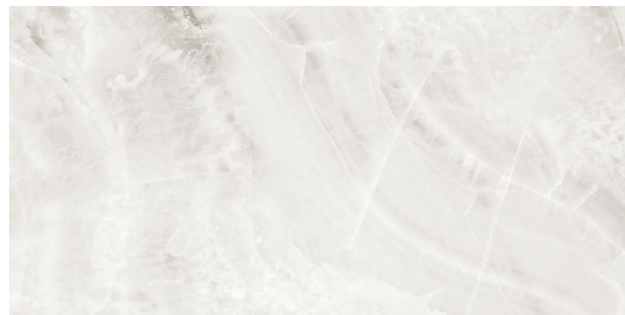
Canyon - Beige - Polished

ONYX

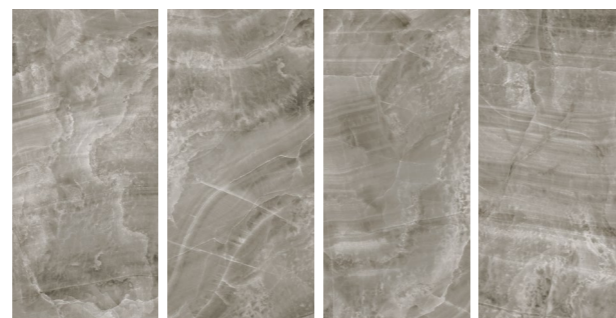
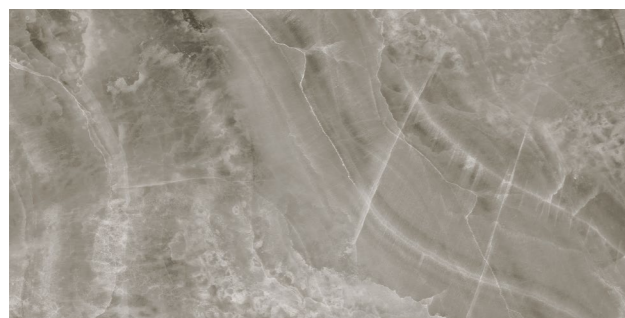
60x120cm



Beige
Polished - Code: 9167



Light Gery
Polished - Code: 9169



Gery
Polished - Code: 9168





DEMETRIA

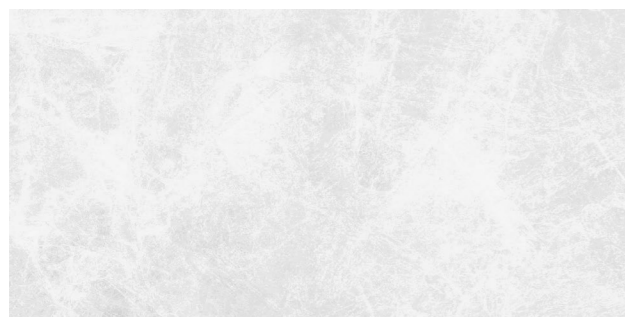
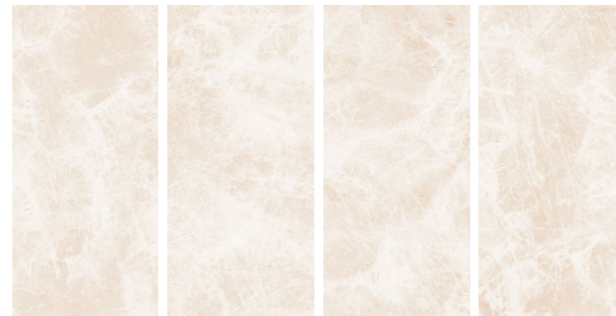
60x120cm



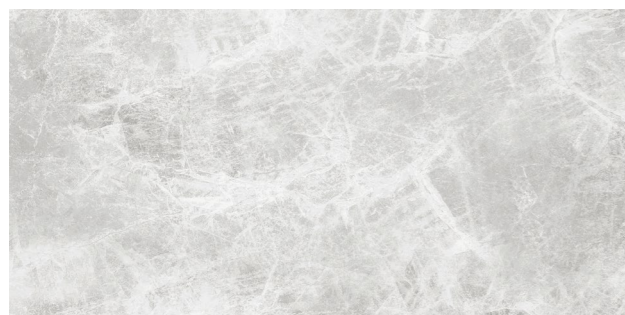
11.4 mm



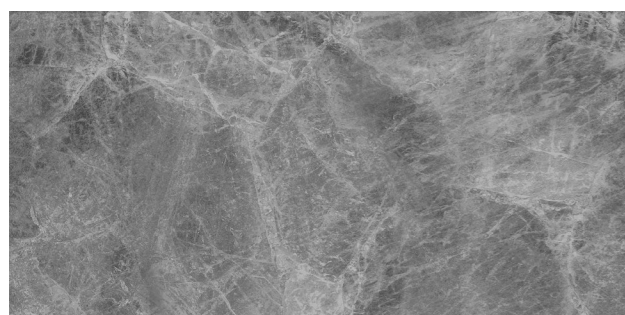
Beige
Polished - Code: 9105



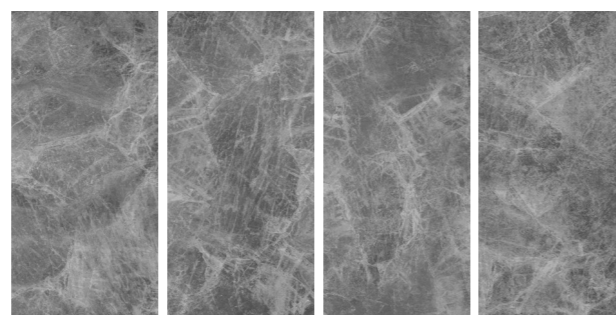
Light Grey
Polished - Code: 9108



Grey
Polished - Code: 9107



Dark Grey
Polished - Code: 9106





Demetria - Grey - Polished



Demetria - Beige - Polished

ALPI

60x120cm



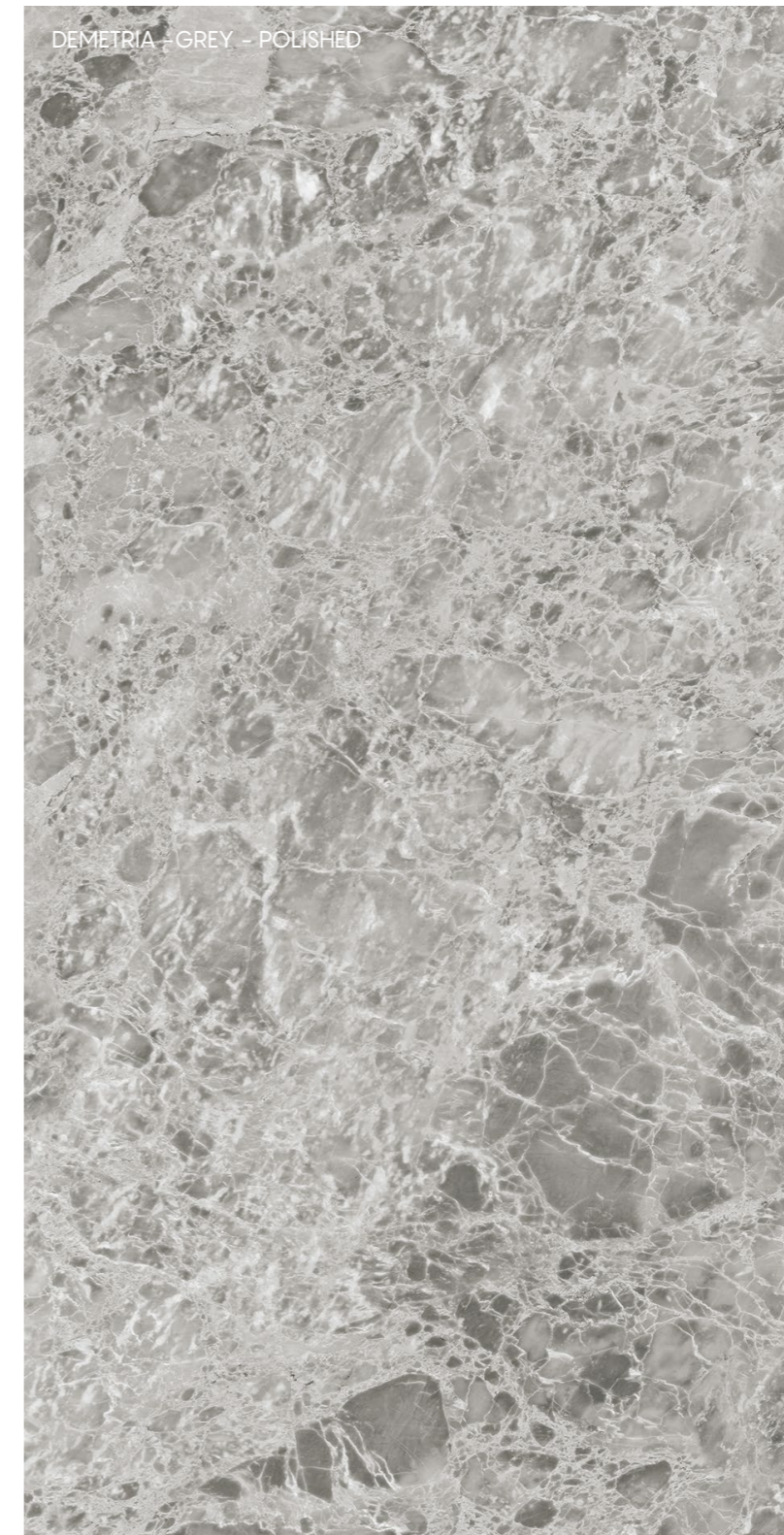
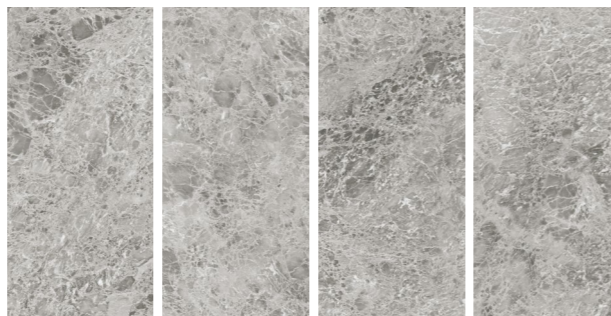
Beige
Polished - Code: 9100



Light Grey
Polished - Code: 9104



Grey
Polished - Code: 9103





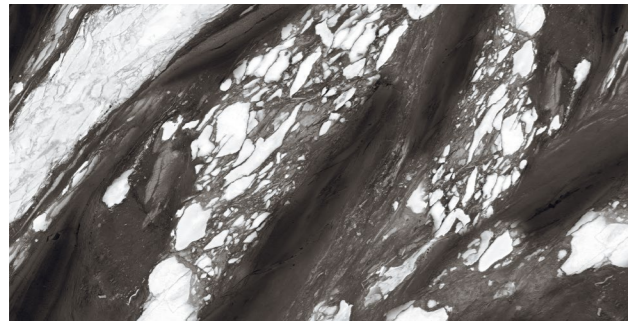
Alpi - Beige - Polished



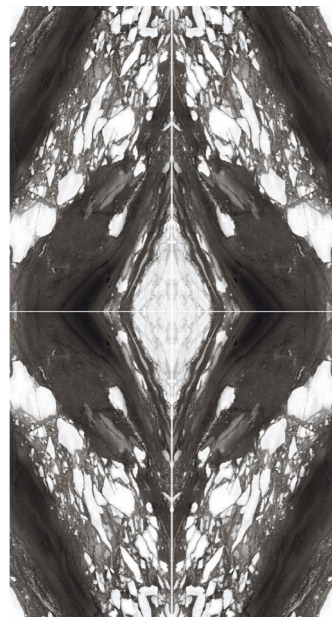
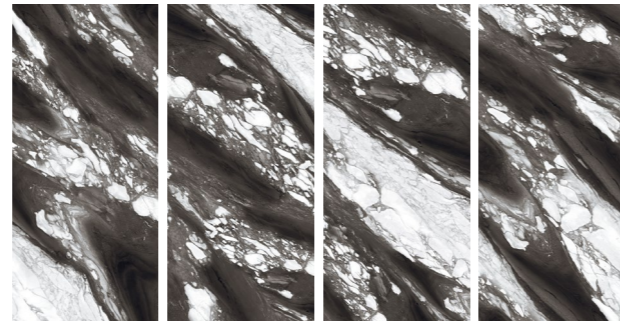
Alpi - Light - Polished

MONTE NERO

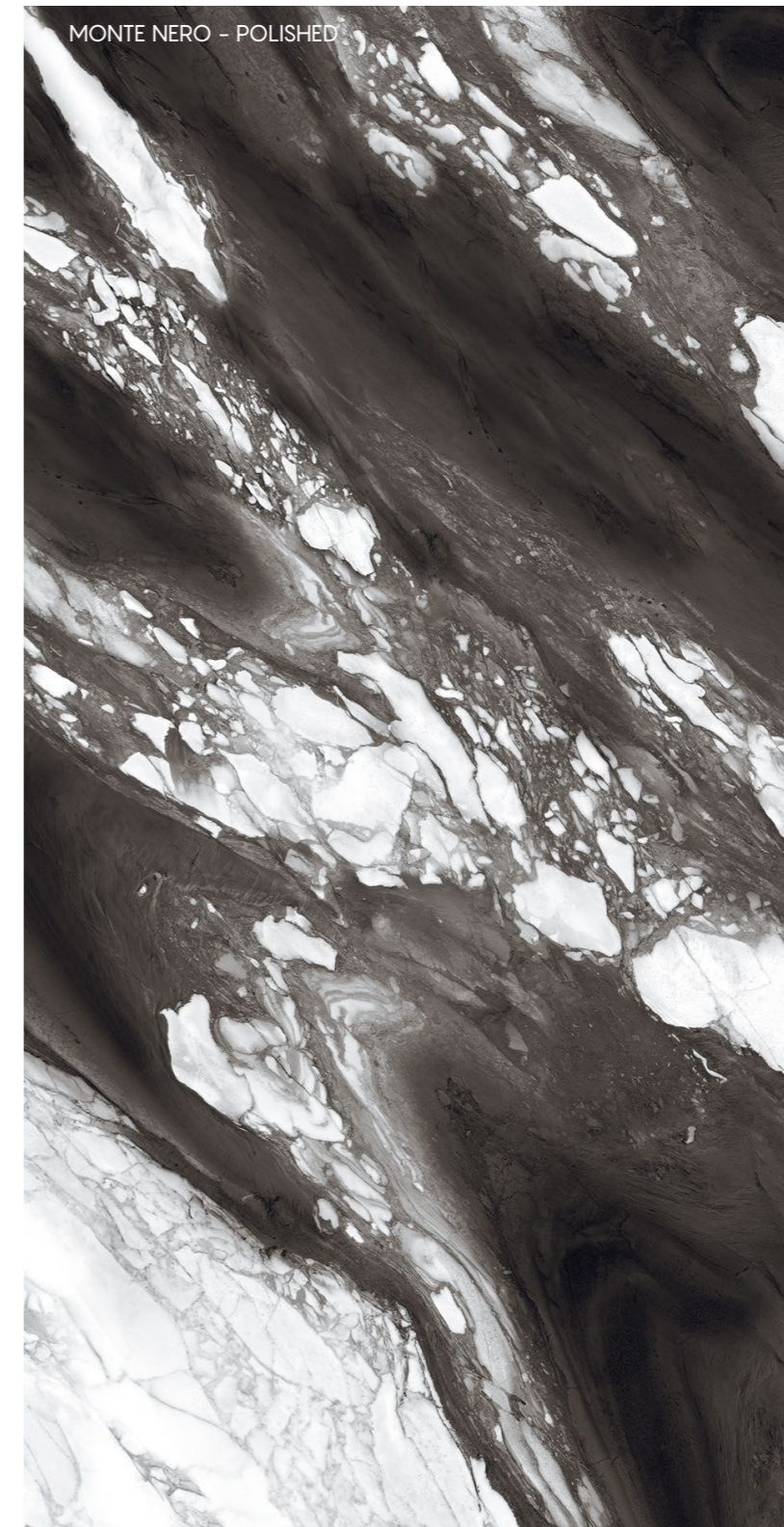
60x120cm



Monte Nero
Polished - Code: 9171



4 x (60x120cm)
Polished - Code: 9270 - 9271





Monte Nero - Polished



Monte Nero - Polished

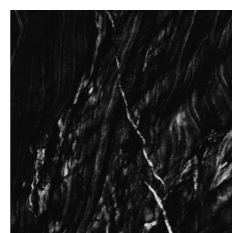
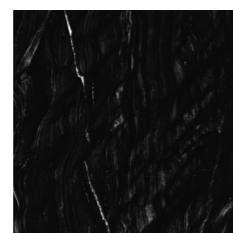
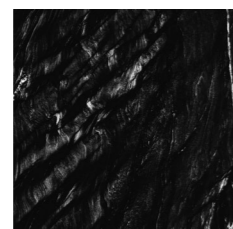
PALISSANDRO



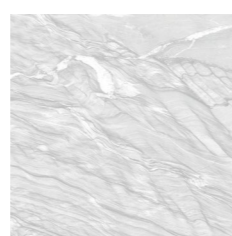
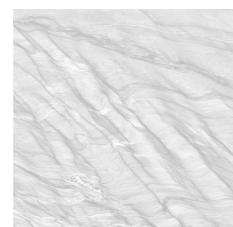
100x100cm



10 mm

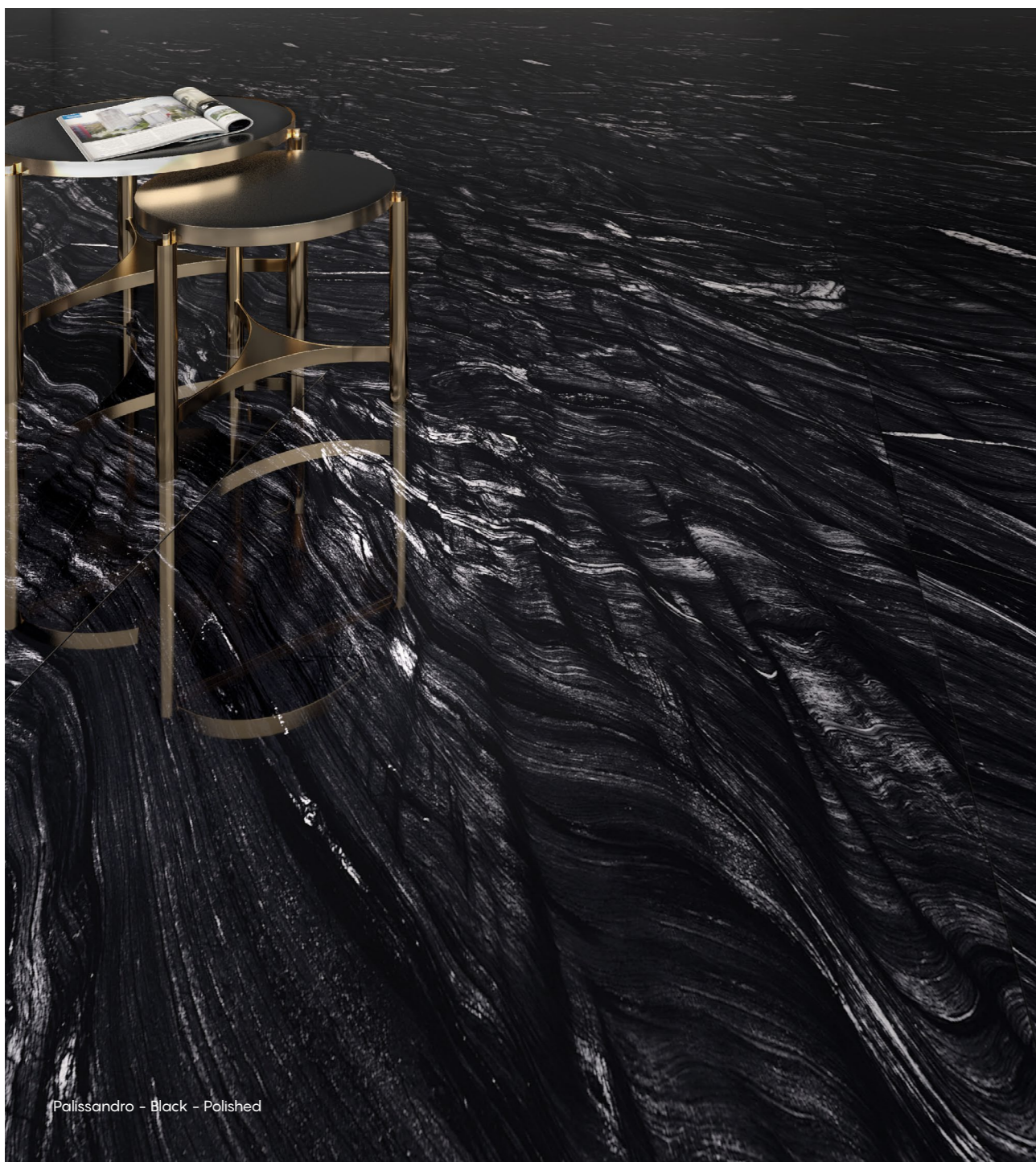


Black
Polished - Code: 9310



Grey
Polished - Code: 9311





Palissandro - Black - Polished



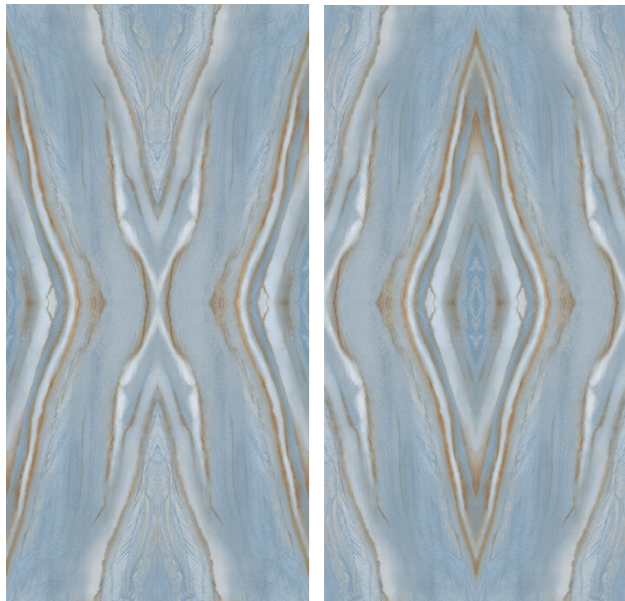
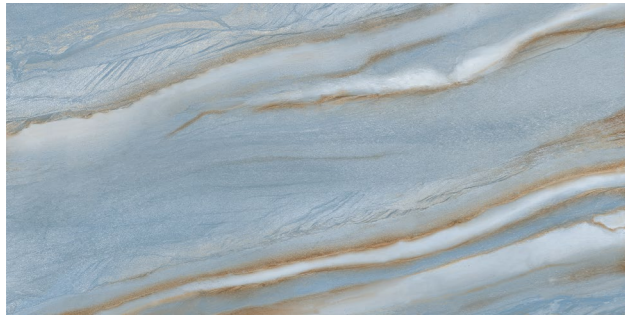
Palissandro - Black - Polished

RIVER

60x120cm



11.4 mm



4 x (60x120cm)
Polished - Code: 9270 - 9271

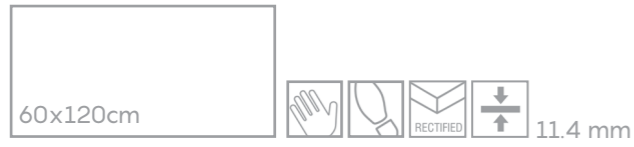




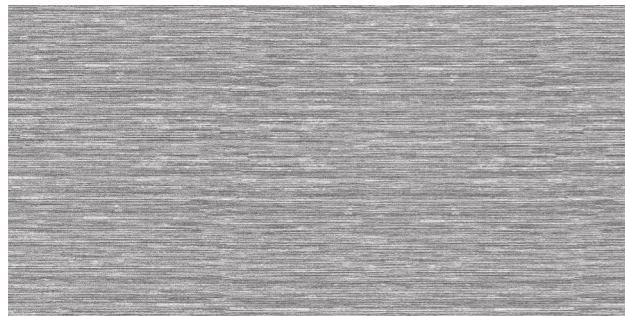


TRAME	136
BAITA	142
DECAPÉ	146
VINTAGE WOOD	150

TRAME - LINO



Light Grey
Matt - Code: 9231



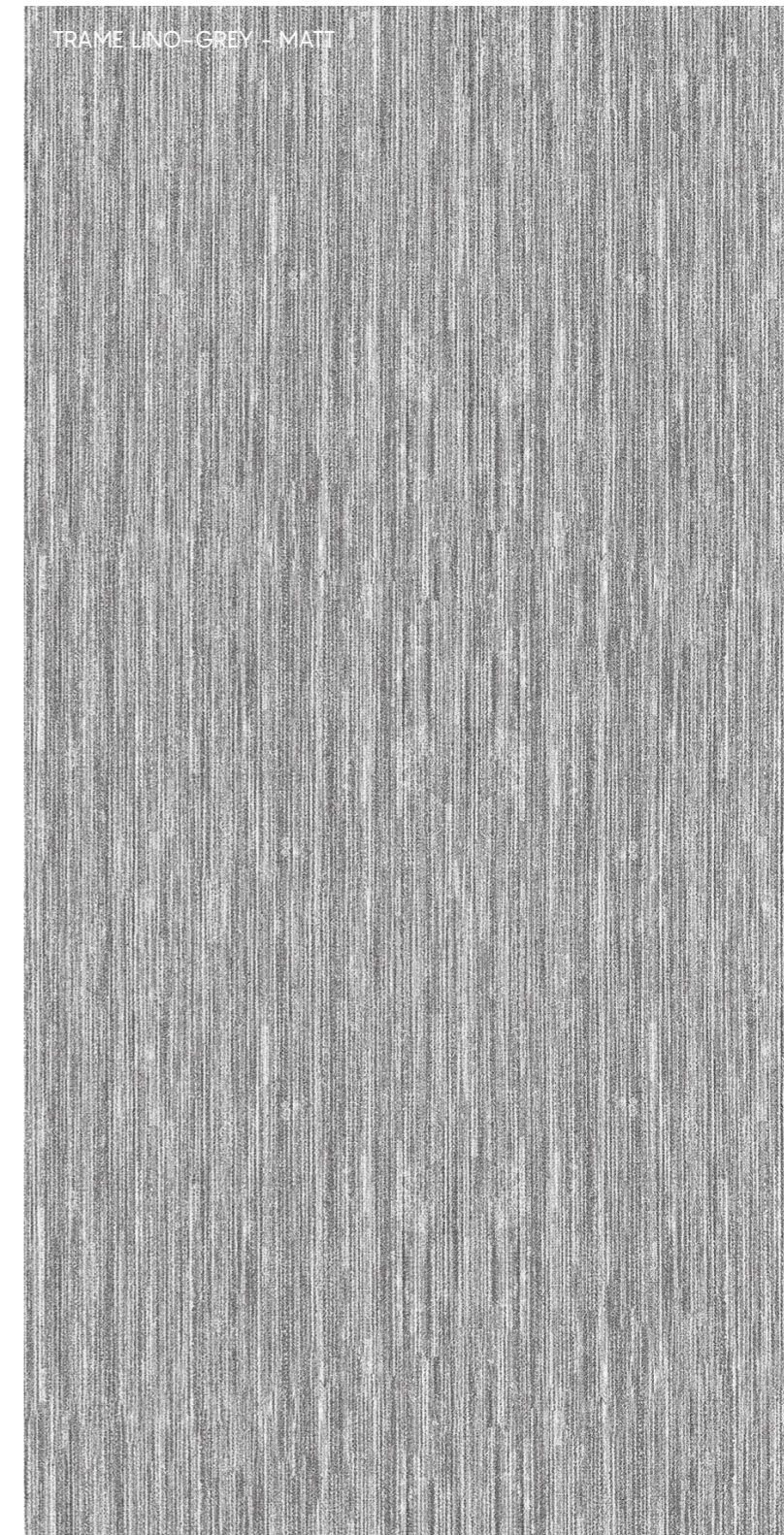
Gery
Matt - Code: 9230



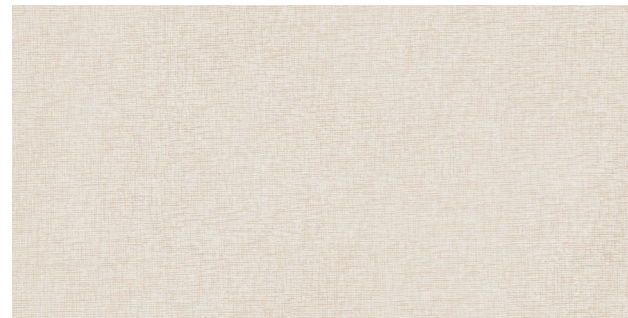
Dark Gery
Matt - Code: 9229



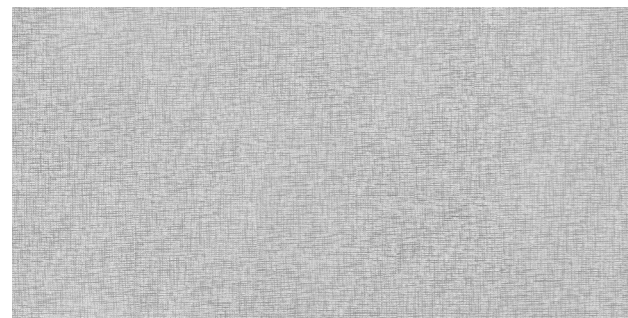
Brown
Matt - Code: 9227



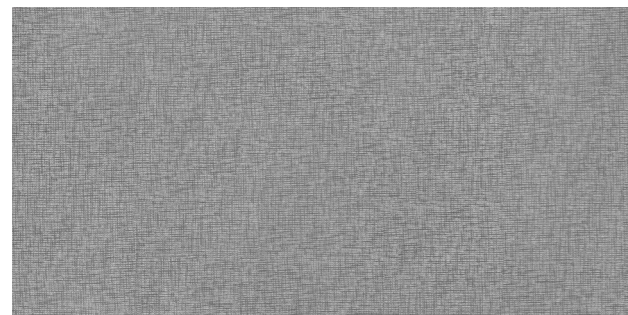
TRAME - CLASSICO



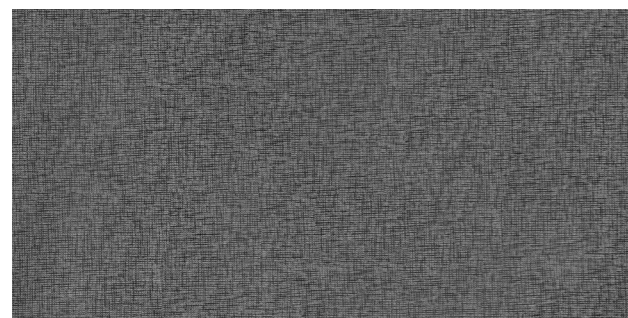
Beige
Matt - Code: 9233



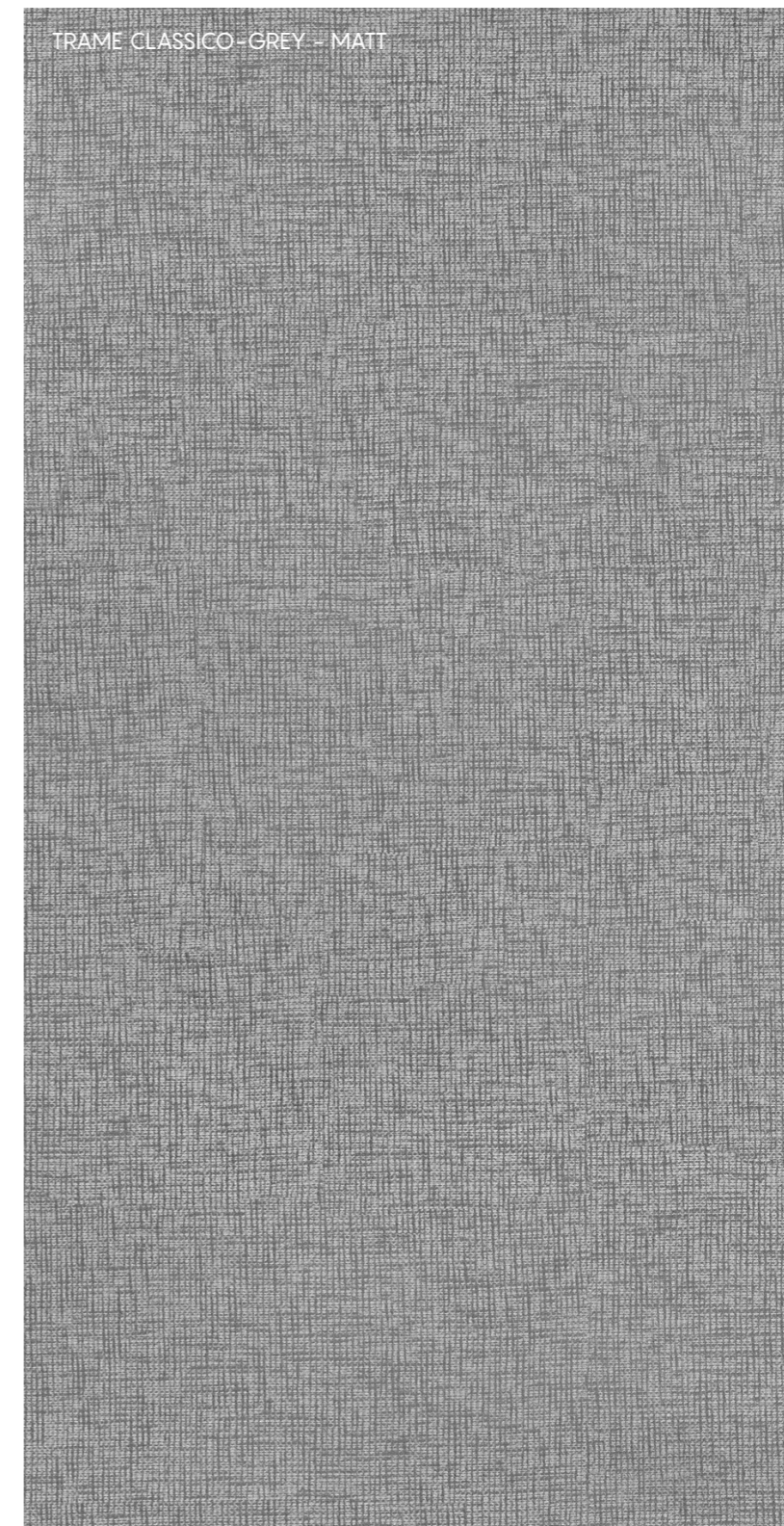
Light Grey
Matt - Code: 9236



Gery
Matt - Code: 9235



Dark Gery
Matt - Code: 9234





Trame Lino - Light - Matt



Trame Classico - Grey - Matt

BAITA

20x120cm  11.4 mm



Grey
Matt - Code: 9193



Brown
Matt - Code: 9191

BAITA - GREY - MATT





Baita - Grey - Matt



Baita - Brown - Matt

DECAPÉ

20x120cm     11.4 mm



Light Beige
Matt - Code: 9196



Light Gery
Matt - Code: 9198



Brown
Matt - Code: 9195



Dark Brown
Matt - Code: 9197





Decapé - Light Beige - Matt



Decapé - Light - Matt

VINTAGE WOOD

20x120cm
60x120cm



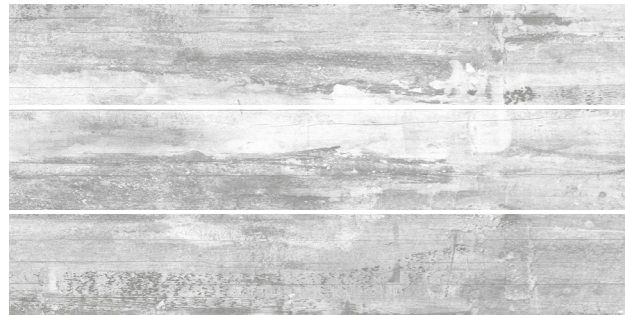
11.4 mm



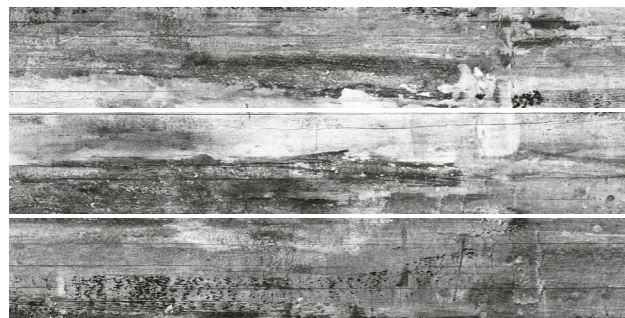
White
Matt - Code: 9157
Polished - Code:9163



White
Matt - Code: 9157
Polished - Code:9163



Gery
Matt - Code: 9156



Matt - Code: 9158
Polished - code: 9164



VINTAGE WOOD



Vintage Wood - Black - Matt



Vintage Wood - Grey - Matt



VOLCAONIVA
MARQUINA

STONE

156
162

VOLCAMONICA

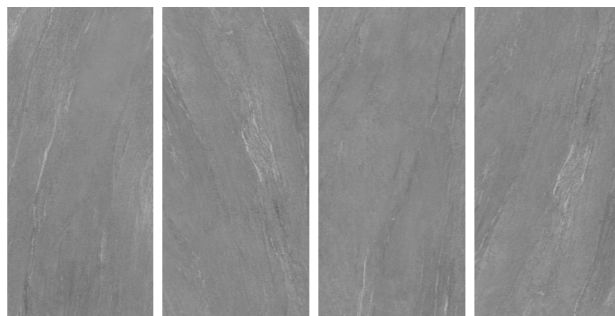
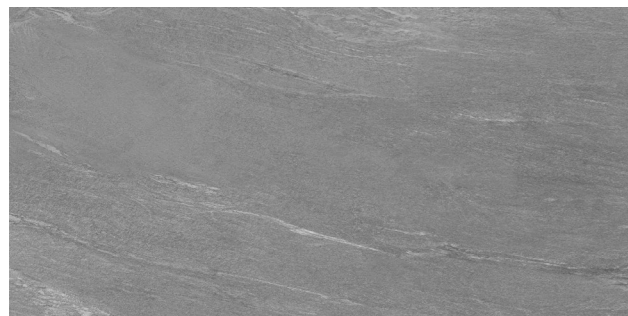
60x120cm



Beige
Matt - Code: 9260



Light Gery
Matt - Code: 9261



Gery
Matt - Code: 9262



VOLCAMONICA



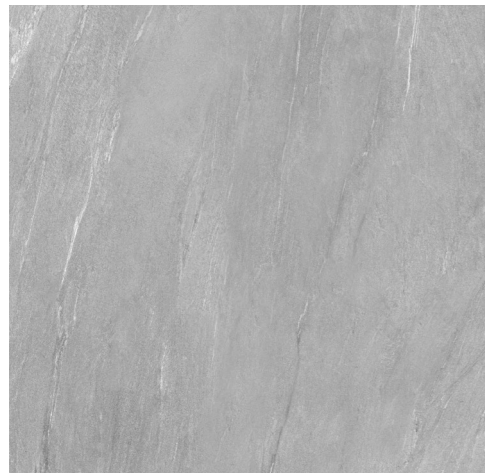
100x100cm



10 mm



Beige
Matt - Code: 9290



Light Grey
Matt - Code: 9291



Grey
Matt - Code: 9292





Volcamonica - Beige - Matt



Volcamonica - Light - Matt

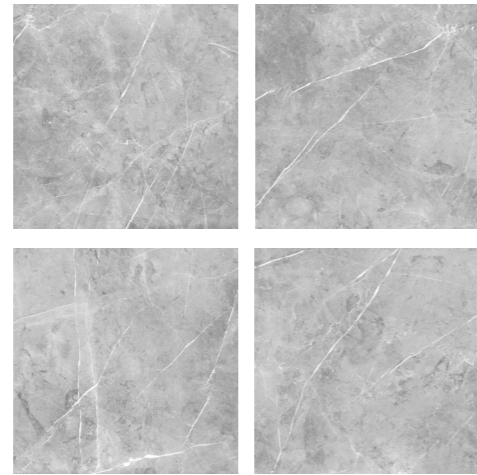
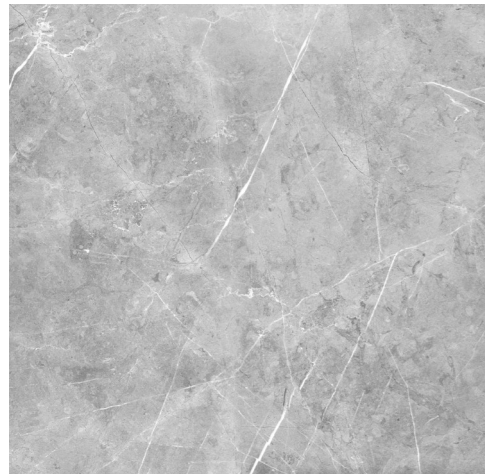
MARQUINA



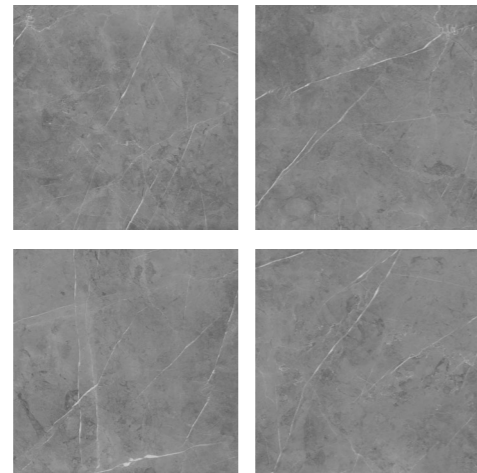
100x100cm



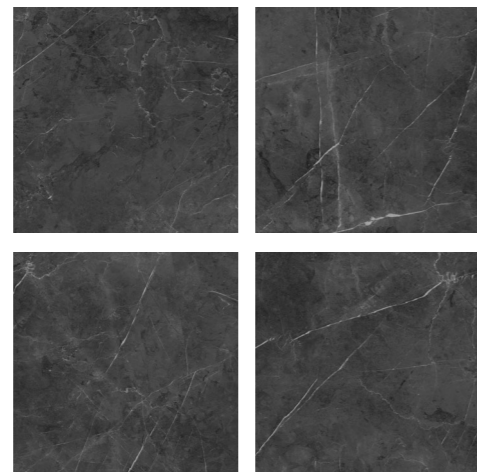
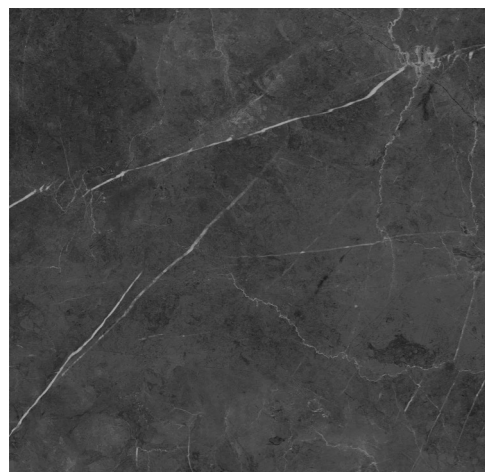
10 mm



MARQUINA - Light Grey
Matt - Code: 9296
Polished - Code: 9300



MARQUINA - Grey
Matt - Code: 9297
Polished - Code: 9301



MARQUINA - Dark Grey
Matt - Code: 9298
Polished - Code: 9302





Marquina - Light - Matt



Marquina - Grey - Polished



PIRITE ORO	168
INDUSTRIA	172
BELVEDERE	176
PLATINIUM	182
TRENTINO	188
PRESIDENT	194
GAYA	200
IRISH GREEN	206

FASHION STONE

PIRITE ORO

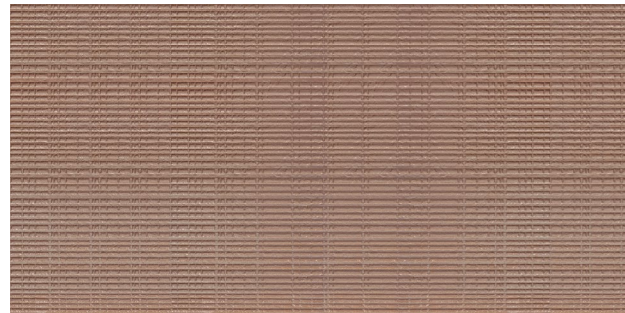
60x120cm



11.4 mm



PIRITE ORO - BAZALT
Code: 9119



PIRITE ORO - GEMMA
Code: 9118



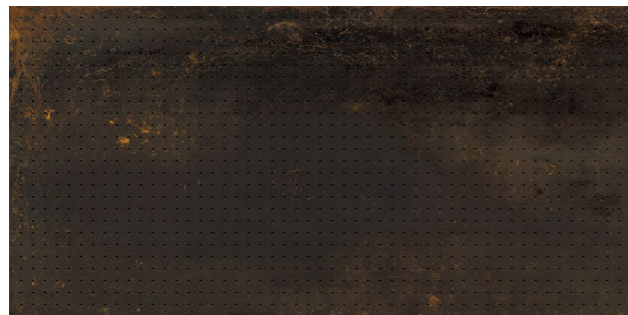
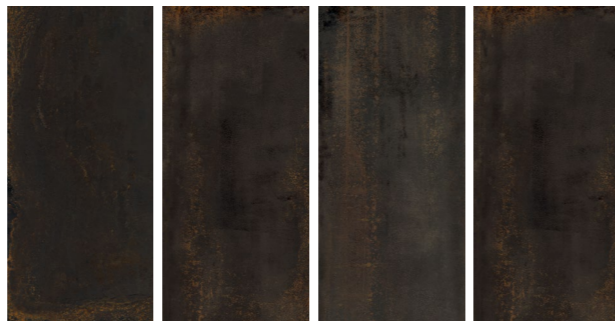


INDUSTRIA

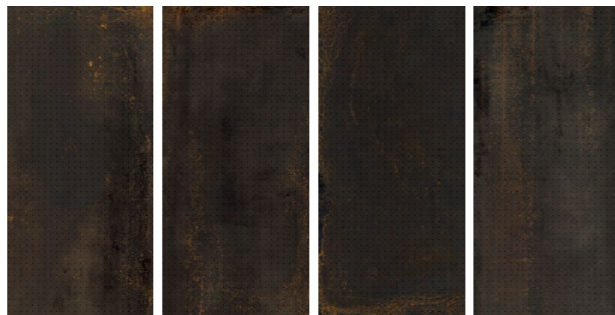
60x120cm



INDUSTRIA
Matt - Code: 9155



INDUSTRIA DOT
Matt - Code: 9161





Industria - Matt



Industria - Matt

BELVEDERE

60x120cm



11.4 mm



BELVEDERE
Polished - Code: 9109



BELVEDERE

The design of the belvedere was inspired by a stone of the same name in Italy. The combination of coarse gray streaks with thinner streaks of white and gold has created an impressive depth in this marble design, which makes it a remarkable element in interior design.

Il design del belvedere è stato ispirato da una pietra omonima in Italia. La combinazione di striature grigie grossolane con striature più sottili di bianco e oro ha creato una profondità impressionante in questo design in marmo, che lo rende un elemento straordinario nel design d'interni.



60x120cm

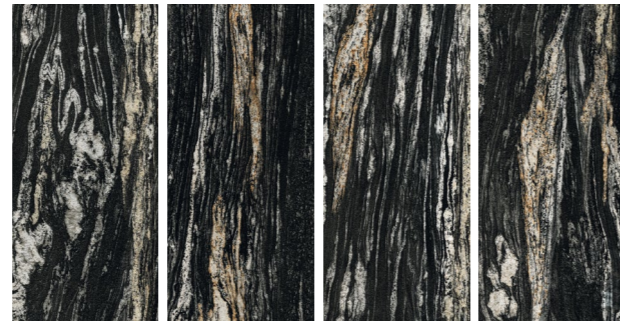
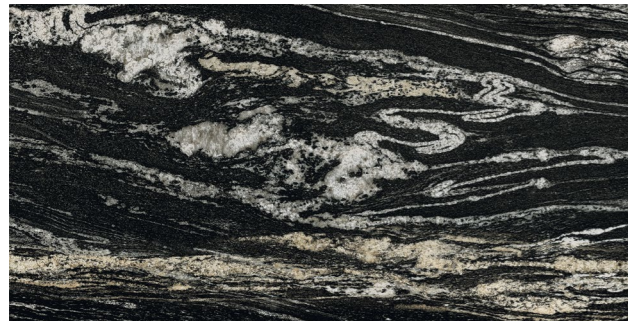


PLATINIUM

60x120cm



11.4 mm



PLATINIUM
Polished - Code: 9110



PLATINIUM

The design of the belvedere was inspired by a stone of the same name in Italy. The combination of coarse gray streaks with thinner streaks of white and gold has created an impressive depth in this marble design, which makes it a remarkable element in interior design.

Il design del belvedere è stato ispirato da una pietra omonima in Italia. La combinazione di striature grigie grossolane con striature più sottili di bianco e oro ha creato una profondità impressionante in questo design in marmo, che lo rende un elemento straordinario nel design d'interni.

60x120cm





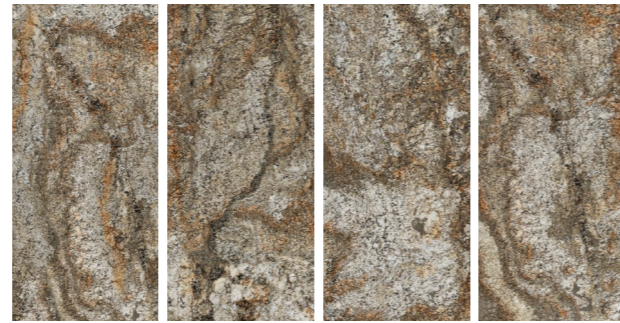
Platinum - Polished



Platinum - Polished

TRENTINO

60x120cm



TRENTINO
Polished - Code: 9112



TRENTINO

In Trentino, there are orange, green and gray streaks on a relatively cold beige background and a crystal texture, it has a stunning shine. These streaks make Ternetito the focal point of your room and an ideal design for kitchen countertops, bathrooms or walls and floors. This design may seem busy and full of streaks at first glance, but the result of its application on large surfaces will be a unique and unmatched space.

In Trentino ci sono striature arancioni, verdi e grigie su uno sfondo beige relativamente freddo e una trama cristallina, ha una lucentezza sorprendente. Queste striature rendono Ternetito il punto focale della tua stanza e un design ideale per piani cucina, bagni o pareti e pavimenti. Questo design può sembrare a prima vista occupato e pieno di striature, ma il risultato della sua applicazione su grandi superfici sarà uno spazio unico e senza eguali.

60x120cm



TRENTINO

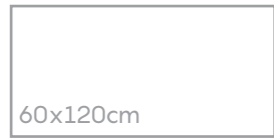


Trentino - Polished



Trentino - Polished

PRESIDENT

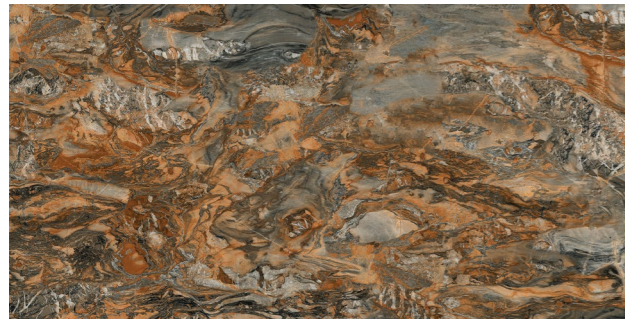


60x120cm

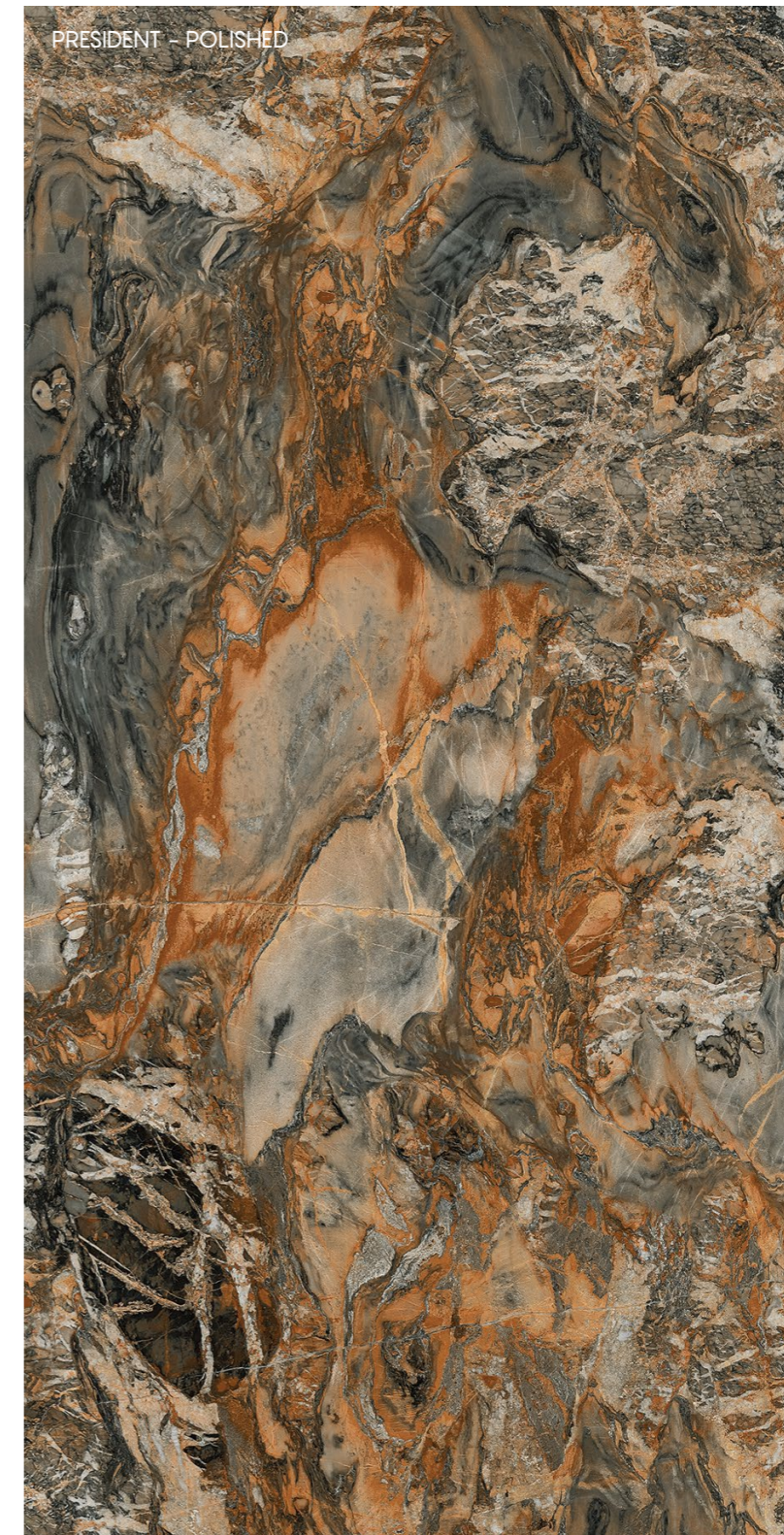


RECTIFIED

11.4 mm



PRESIDENT
Polished - Code: 9113



PRESIDENT

If you're looking to add a warmer vibe to your space, President is the perfect choice. In this design, the predominance of warm red and orange colors is moderated with gray and blue halos. Reconciling designs with such apparent contradictions can be difficult. However, this design, next to colors such as gray, black and cream-beige, shows its beauty twice.

Se stai cercando di aggiungere un'atmosfera più calda al tuo spazio, President è la scelta perfetta. In questo design, la predominanza dei caldi colori rosso e arancio è moderata con aloni grigi e blu. Conciliare progetti con tali apparenti contraddizioni può essere difficile. Tuttavia, questo design, accanto a colori come il grigio, il nero e il beige crema, mostra la sua bellezza due volte.

60x120cm





President - Polished



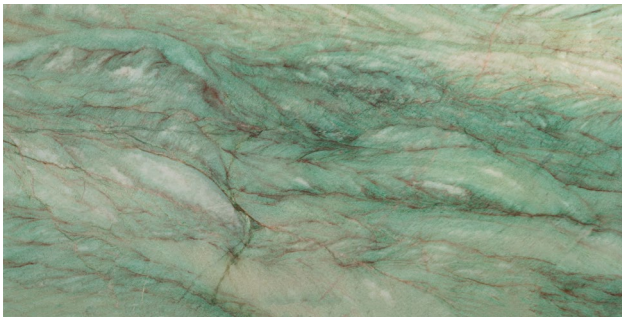
President - Polished

GAYA

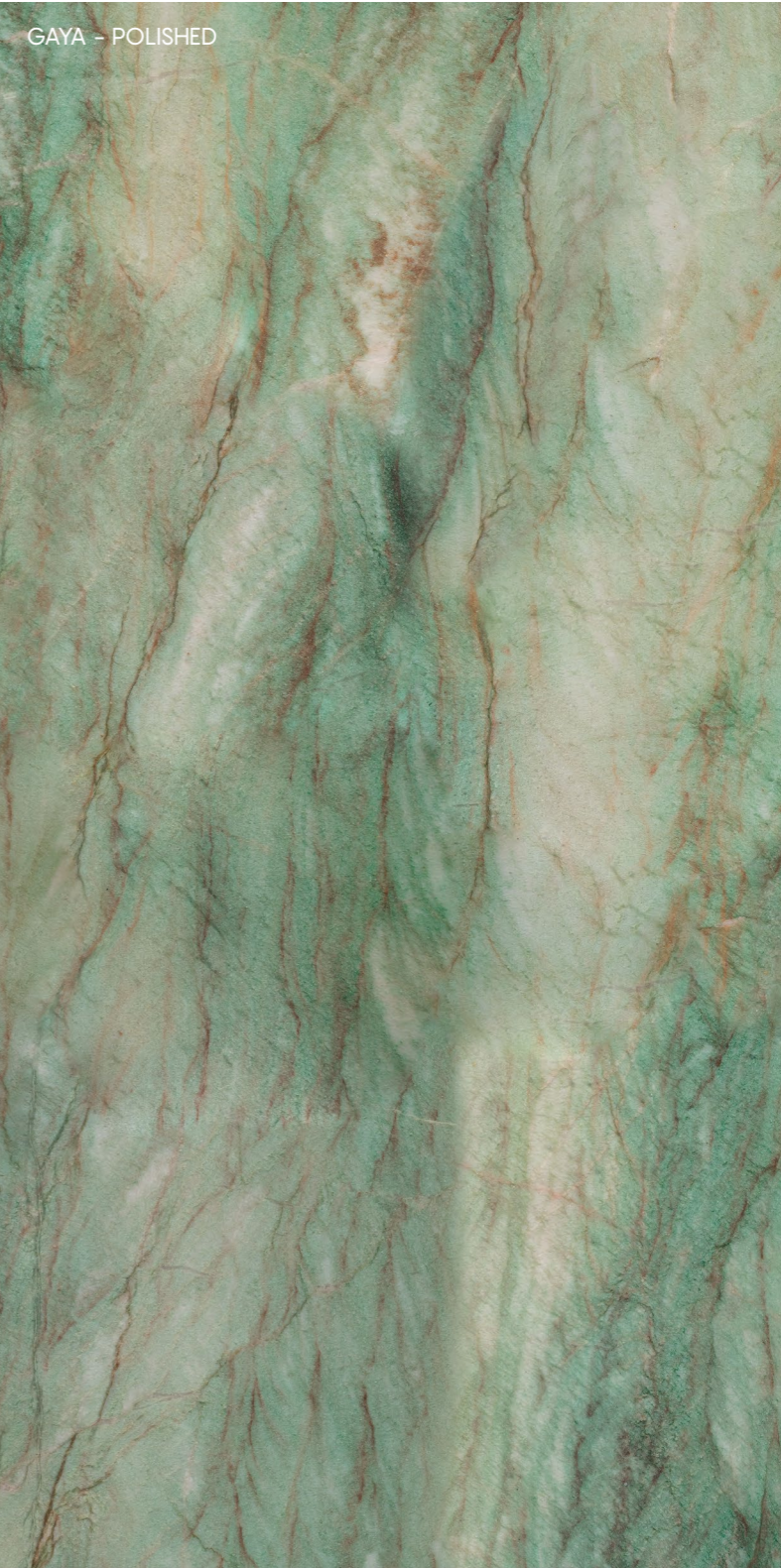
60x120cm



11.4 mm



GAYA
Polished - Code: 9111



GAYA

The Gaya design is inspired by the Brazilian quartzite stone. The light tonality of the green color and halos of cream and orange in between, in balance with the crossed veins, make the design vivid and impressive.

Il design Gaya si ispira alla pietra di quarzite brasiliana. La tonalità calma del colore verde e gli aloni di crema e arancio nel mezzo, in equilibrio con le venature incrociate, rendono il disegno vivido e impressionante.



60x120cm

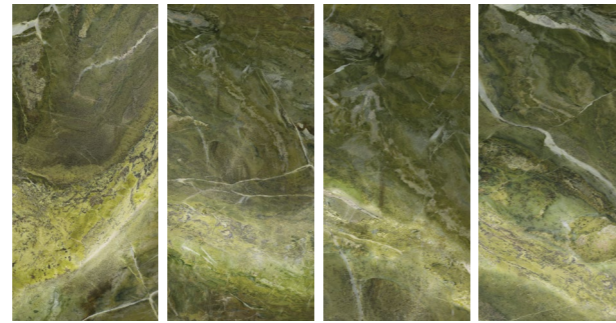


IRISH GREEN

60x120cm



11.4 mm



IRISH GREEN
Polished - Code: 9115



IRISH GREEN

Irish Green is the green color of the Irish flag. The emerald gem with those green hills and those rich green shades. The Irish Green design can be a reminder of nature, freshness, flourishing of life and a new beginning. It can give life to the interior space and create a sense of the outside space inside.

Irish Green è il colore verde della bandiera irlandese. La gemma di smeraldo con quelle verdi colline e quelle ricche sfumature di verde. Il design Irish Green può ricordare la natura, la freschezza, lo sbocciare della vita e un nuovo inizio. Può dare vita allo spazio interno e creare un senso dello spazio esterno all'interno.



60x120cm

IRISH GREEN



Irish Green - Polished



Irish Green- Polished

TECHNICAL FEATURES



PRODUCT CERTIFICATION & DECLARATION OF PERFORMANCE
CERTIFICAZIONE DRL PROTOTO& DICHAIRAZIONE DI ORESTAZIONE

Technical Characteristics <i>Caratteristiche Tecniche</i>	Standards <i>Norma</i>	Standard values <i>valore Norma</i>	Average Values <i>valore medio</i>
LENGTH & WIDTH <i>LUNGHEZZA LARGHEZZA</i>		± 0.5%	± 0.1%
RECTANGULARITY <i>RETTANGOLARITÀ</i>	ISO 10545-2	± 5%	± 0.2%
SIDES' STRAIGHTNESS <i>RETTILINEITÀ DEI LATI</i>		± 0.5%	± 0.2%
FLATNESS <i>PLANARITÀ</i>		± 0.5%	± 0.3%
WATER ABSORPTION <i>ASSORBIMENTO D'ACQUA</i>	ISO 10545-3	0.5 < E ≤ 3%	Average 0.3% <i>Media 0.3%</i>
MODULUS OF RUPTURE (N/mm ²) <i>MODULO DI ROTTURA (N/mm²)</i>	ISO 10545-4	≥ 30 N/mm ²	Average 36 <i>Media 36</i>
IMPACT RESISTANCE <i>RESISTENZA ALL'IMPATTO</i>	ISO 10545-5		Min.0.8
ABRASION RESISTANCE <i>RESISTENZA ALL'ABRASIONE</i>	ISO 10545-7	I - V	II - VI
THERMAL EXPANSION COEFFICIENT(0-100°C) <i>COEFFICIENTE DI DILATAZIONE TERMICA(0-100°C)</i>	ISO 10545-8	Test Method Available <i>Metodo di prova disponibile</i>	Max. 7.5x10 ⁻⁶ (1/K)
THERMAL SHOCK RESISTANCE <i>RESISTENZA AGLI SHOCK TERMICI</i>	ISO 10545-9	Required <i>Necessario</i>	In Compliance With The Requirements <i>In conformità con i requisiti</i>
CRAZING RESISTANCE <i>RESISTENZA AL CAVILLO</i>	ISO 10545-11	Required <i>Necessario</i>	Method Available <i>Metodo disponibile</i>
FROST RESISTANCE <i>RESISTENZA AL GELO</i>	ISO 10545-12	Required <i>Necessario</i>	In Compliance With The Requirements <i>In conformità con i requisiti</i>
CHEMICAL RESISTANCE <i>RESISTENZA CHIMICA</i>	ISO 10545-13	Min. Class B	Class GLA
STAIN RESISTANCE <i>RESISTENZA ALLE MACCHIE</i>	ISO 10545-14	Min. Class 3	Class 5
FRICTION COEFFICIENT <i>COEFFICIENTE DI ATTRITO</i>	ISO 10545-17	Required <i>Necessario</i>	Min.II

PACKING LIST

		Pcs 	M ² 	Kg 	Box 	M ² 	Kg 		
Nominal size	Realsize	Pcs/Box	Sqr/Box	Kg/Box	Boxes/PLT	Sqr/PLT	kg/PLT	PLT size	Thickness
60x120	60x120	2	1.44	36.5	32	46.08	1168	100x125	11.4
100x100	100x100	2	2	46.8	32	64	1530	100x 105	10

PRODUCTION

TECHNOLOGY

Angelo Ceramica tries to stay constantly updated on the best production techniques to create the designs and configurations necessary to express the taste of ceramics. Quality and innovation represent for Angelo ceramica an essential prerogative on which to base the choice of ceramic product in its design declinations. Therefore, we always try to be as up-to-date as possible on the best production techniques that allow us to achieve aesthetic and qualitative results in the best standards. Our technologies identify different types of applications:

GLAZED PORCELAIN (GP)

The resistance guaranteed by Gres porcelain link to the aesthetic possibilities allowed by the new graphic and glazed application, put our product in the condition to perform at its best different styles to reproduce any kind of design in order to be updated and propoitive with any trend

COLOR BODY PORCELAIN (A+)

It represents our best technological interpretation applied to ceramics. Using the same characteristics of natural stone with therefore greater resistance and durability through the use of mixtures that still allow with the appropriate graphic applications to achieve high-level aesthetic results for all types of use, with particular attention to the most demanding from technical point of view.

DGITAL TECHNOLOGY

Angelo Ceramica makes use of the best digital technologies on the market to always reach the highest aesthetic / quality levels in the ceramic field. The digitalization combined with the continuous research allows Angelo Ceramics alot of accuracy in the search for the final face of the design and the best possible depth especially in the case of polished versions through the use of grits that allow greater depth and better detail as well as better quality performance

THIRD FIRE (3F)

Angelo Ceramica comprende al suo interno la possibilita' di sviluppare elementi ceramici decorativi attraverso la tecnologia del terzo fuoco, che attraverso una ulteriore applicazione di smalti nobili e ulteriore cotture permette di ottenere decori con caratteristiche uniche di design. In questo modo i decori acquistano una propria peculiarita' distintiva in termini di profondita' dell'immagine e di ricchezza del colore.



PRODUZIONE

TECNOLOGIE

Angelo Ceramica cerca di rimanere costantemente aggiornata sulle tecniche produttive migliori per realizzare i design e le configurazioni necessarie ad esprimere il gusto della ceramica. La qualita' e l'innovazione rappresentano per Angelo ceramica una prerogativa imprescindibile sulla quale basare la scelta del prodotto ceramico nelle sue declinazioni design. Cerchiamo quindi sempre di essere quanto piu' aggiornati possibile sulle tecniche produttive migliori che permettano di raggiungere risultati estetici e qualitativi nei migliori standard. Le nostre tecnologie individuano diversi tipi di applicazioni:

PORCELLANATO SMALTATO

La resistenza garantita dal porcellanato unita alle possibilita' estetiche consentite dalle nuove applicazioni grafiche e di smaltatura, ci permettono di interpretare al meglio i diversi stili da riprodurre per design di ogni tipo in modo da essere propositivi e al passo con ogni trend.

PORCELLANATO IMPASTO COLORATO (A+)

Rappresenta la ns migliore interpretazione tecnologica applicata alla ceramica. Utilizzando stesse caratteristiche della pietra naturale con quindi maggiore resistenza e durabilita' attraverso l'utilizzo di impasti che permettono comunque con le opportune applicazioni grafiche di raggiungere risultati estetici di alto livello per tutte le tipologie di utilizzo, con particolare attenzione per le piu' impegnative dal punto di vista tecnico.

TECNOLOGIA DIGITALE

Angelo Ceramica fa uso delle migliori tecnologie digitali in commercio per poter raggiungere sempre i piu' alti livelli estetico/qualitativi in ambito ceramico. La digitalizzazione unita alla ricerca continua permette ad Angelo ceramica molta accuratezza nella ricerca del volto finale del design e la migliore profondita' possibile soprattutto nel caso di versioni levigate attraverso l'utilizzo di graniglie che permettono maggiore profondita' e miglior dettaglio nonche' migliore resa qualitativa

TERZO FUOCO (3F)

Angelo Ceramica comprende al suo interno la possibilita' di sviluppare elementi ceramici decorativi attraverso la tecnologia del terzo fuoco, che attraverso una ulteriore applicazione di smalti nobili e ulteriore cotture permette di ottenere decori con caratteristiche uniche di design. In questo modo i decori acquistano una propria peculiarita' distintiva in termini di profondita' dell'immagine e di ricchezza del colore



INSTALLATION

The success of a floor is due not only to the quality of the tiles, but to a whole set of elements (substrate, bonding layer, expansion joints, etc.) that constitute a real system. This is why the laying operations are to be considered as important as the choice of tile.

However, it is up to the designer to establish the correct application method of the tiles and the type of tile to be used, depending on the structure and the intended use of the decking.

The laying can be done either with cement mortar or with adhesives or adhesives. To proceed with the installation with adhesive it is necessary before proceeding to verify that the substrate possesses suitable characteristics for bonding the ceramic such as: stability and dimensional regularity, rigidity, absence of cracks, cleaning and surface integrity, absence of excess humidity and / or contaminants.

Before starting to lay any surface it is recommended to make sure that the amount of stoneware is adequate and sufficient for the quantity, tone and size required. Very important is the verification of the material before laying to check that the material itself does not present any defects or imperfections of any kind, since once the installation has been carried out the material cannot be object of dispute if the defect was evident before laying.

Then all the rules and precautions that are at the base of a correct execution of the work must be carried out (preparation of the substrate, composition of the mortar or glues, maturation times, positioning of expansion joints, etc.)

In large rooms it is absolutely necessary to position the expansion joints regularly (following the rules valid for interiors and exteriors). In smaller rooms it will be enough to maintain a slight detachment between the tiled and the perimeter walls with the care to insert skirting boards for a suitable finish.

Avoid transit on the floor for at least 2/3 days after laying. In case of need, cover the floor properly to allow the passage without causing damage.

After laying, it is recommended to adequately protect the floor until the end of the site in order to avoid damage caused by abrasive substances or other harmful agents.

POZA IN OPERA

La riuscita di un pavimento è dovuta non solo alla qualità delle piastrelle, ma a tutto un insieme di elementi (sottofondo, strato legante, giunti di dilatazione, ecc...) che costituiscono un vero e proprio sistema. Ecco perché le operazioni di posa sono da considerarsi importanti tanto quanto la scelta della piastrella.

E' comunque compito del progettista stabilire, in funzione della struttura e della destinazione d'uso del piano di calpestio, il corretto modo di applicazione delle piastrelle e il tipo di piastrella da utilizzare.

La posa può essere fatta sia con malta cementizia che con collanti o adesivi. Per procedere alla posa con adesivo è necessario prima di procedere, verificare che il supporto possieda idonee caratteristiche per l'incollaggio della ceramica quali: stabilità e regolarità dimensionale, rigidità, assenza di fessurazioni, pulizia e integrità superficiale, assenza di umidità in eccesso e/o di agenti contaminanti.

Prima di iniziare le operazioni di posa di una qualsiasi superficie si raccomanda di accertarsi che la partita di gres sia adeguata e sufficiente per quantità, tono e calibro a quella necessaria. Molto importante è la verifica del materiale prima della posa per verificare che il materiale stesso non presenti difetti o imperfezioni di qualsiasi natura, poiché una volta proceduta con la posa il materiale non può essere oggetto di contestazione se il difetto era evidente prima della posa.

Si dovranno poi eseguire tutte le norme e le precauzioni che sono alla base di una corretta esecuzione del lavoro (preparazione del sottofondo, composizione della malta o dei collanti, tempi di maturazione, posizionamento dei giunti di dilatazione, ecc...)

In ambienti di grandi dimensioni è assolutamente necessario posizionare i giunti di dilatazione con regolarità (seguendo le norme valide per interni ed esterni). In ambienti più ridotti basterà mantenere un leggero stacco tra il piastrellato e i muri perimetrali con l'accortezza di inserire battiscopa per una finitura idonea.

Evitare il transit sul pavimento per almeno 2/3 giorni dopo la posa. In caso di necessità coprire opportunamente con tavolato il pavimento per consentire il passaggio senza arrecare danni.

Successivamente alla posa si raccomanda di proteggere adeguatamente il pavimento sino al termine del cantiere in modo tale da evitare danni causati da sostanze abrasive o da altri agenti dannosi.

INSTALLATION SUGGESTION PARTICULARLY FOR OUR DECORATIVE TILES

The production of Angelo Ceramica is characterized by numerous plastic solutions that change the surface of the tile so as to allow further decorations to the simple color and design. To obtain a correct installation and a suitable result, please pay attention in laying the right tile position to obtain the necessary continuity in the decoration.

Our tiles have an arrow on the back (Fig A)

that allows you to orient the tiles correctly and avoid unpleasant problems (Fig B).

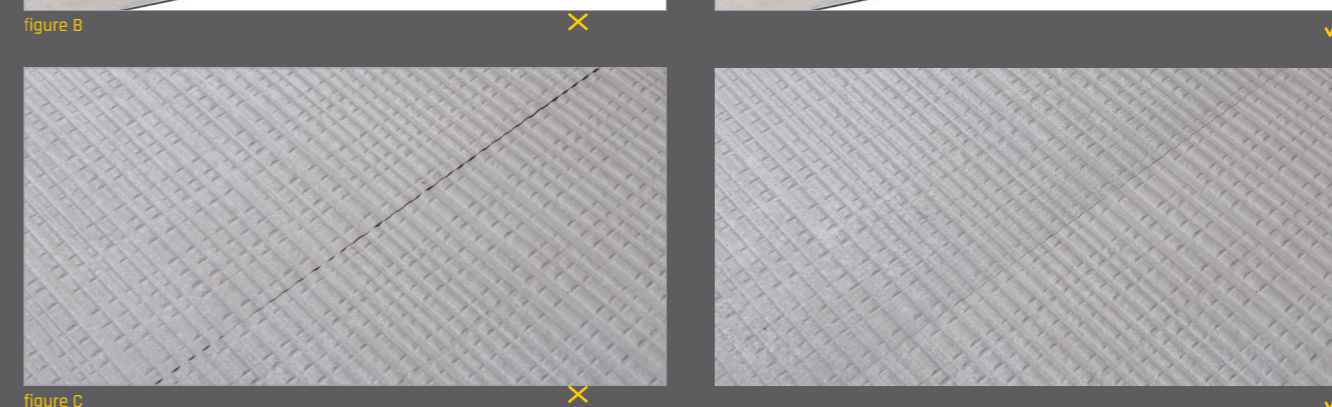
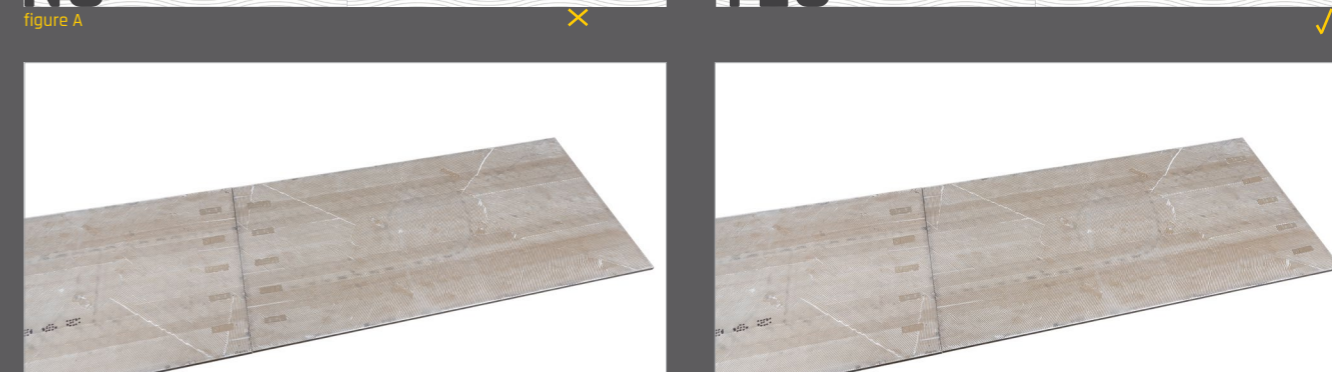
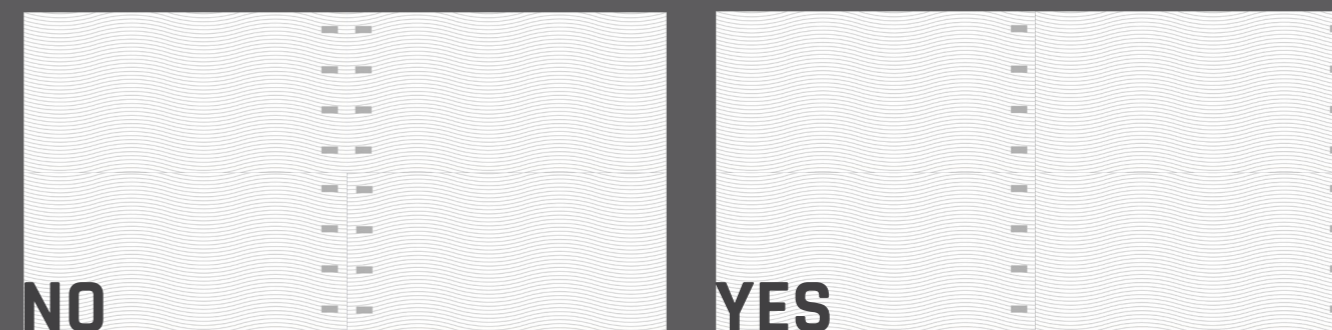
Always following the direction of the arrow, the elements with structure will then be properly laid as shown in the (Fig C)

CONSIGLI DI POSA PER DECORI E PRODOTTI DECORATIVI

La produzione di Angelo Ceramica si caratterizza di numerose soluzioni plastiche che vanno a modificare la superficie della piastrella in modo da permettere decorazioni ulteriori al semplice colore e disegno. Per ottenere una posa corretta ed un risultato idoneo prego prestare attenzione nella posa della giusta posizione della piastrella per ottenere la continuità necessaria nel decoro.

Le piastrelle hanno sul retro una freccia che permette di orientare le piastrelle nel modo corretto ed evitare quindi spiacevoli inconvenienti.

Seguendo sempre la direzione della freccia, gli elementi con struttura saranno quindi posati idoneamente come illustrato nelle foto/figure



CLEANING TIPS

FIRST CLEANING

Its purpose is to eliminate all traces of grouting resulting from the closure of joints or joints. It is performed only once and before the use of the floor and must be performed after laying and before using the flooring.

1. sweep and clean the floor from any coarse dirt.
2. moisten the surface with water so that the joints are soaked with water so as to better protect them from the corrosive action of the acid component detergent.
3. spread the acid-based detergent on the surface diluted in the appropriate proportion with the water. Prevent the detergent from coming into contact with steel, aluminum or natural marble parts adjacent to the tiled floor.
4. let the detergent act for a suitable time in relation to the state of the floor and at the same time rub the most resistant dirt)
5. rinse thoroughly with water and immediately collect dirty water.

If the first cleaning is performed after the floor has already been used, then before carrying out the first cleaning, then it is necessary to remove with appropriate alkaline detergents (degreasers) any existences of fatty substances or the like). In case the cleaning operation can be repeated.

NON-SLIP SURFACES

This type of rough or textured surface is more difficult to clean. After the tiles have been grouted, it is important to remove all excess material as soon as possible and to wash the surfaces repeatedly with a sponge and water until the tiniest residue has been eliminated.

After this, the surface can be cleaned with a single-brush cleaner and relative discs.

DAILY CLEANING

Always use a neutral detergent (that does not contain wax and will not deposit a glossy patina) diluted in hot water for the daily cleaning.

operations and comply with the instructions on the package.

CONSIGLI PER LA PULIZIA

PRIMA PULIZIA

Ha lo scopo di eliminare ogni traccia di stuccatura conseguente alla chiusura dei giunti o fughe. Si esegue una sola volta e prima dell'utilizzo del pavimento e deve essere obbligatoriamente eseguita dopo la posa in opera e prima dell'uso della pavimentazione.

1. spazzare e pulire il pavimento da ogni eventuale sporco grossolano
2. inumidire con acqua la superficie affinché le fughe vengano impregnate di acqua in modo da proteggerle meglio dall'azione corrosiva del detergente a componente acida
3. stendere il detergente a base acida sulla superficie diluito nella idonea proporzione con l'acqua (generalmente il rapporto 1 a 5 è consigliato). Evitare che il detergente venga a contatto con parti di acciaio, alluminio o marmo naturale adiacenti al pavimento piastrellato.
4. lasciare agire il detergente per un tempo idoneo in relazione allo stato del pavimento e nel contempo strofinare lo sporco più resistente)
5. sciacquare abbondantemente con acqua e raccogliere subito l'acqua sporca.

Se la prima pulizia viene eseguita dopo che il pavimento è già stato utilizzato, allora prima di effettuare la prima pulizia, allora è necessario rimuovere con appositi detersivi alcalini (sgrassanti) eventuali esistenze di sostanze grasse o simili). In caso l'operazione di pulizia può essere ripetuta.

SUPERFICI ANTISCIVOLO

Questi tipi di superfici, ruvide o strutturate, si puliscono più laboriosamente. È importante dopo la stuccatura togliere tutti gli eccessi in breve tempo e con frequenti lavaggi usando spugna e acqua fino a rimuovere ogni minimo residuo. In seguito o fare lavaggio utilizzando monospazzola con dischi.

PULIZIA QUOTIDIANA

Effettuare le pulizie quotidiane sempre con detersivi neutri (che non contengono cere o non depositano patine lucide) diluiti in acqua calda, seguendo le indicazioni riportate sulle confezioni.



Italy Main Office

Via Ciro Menotti, 77, 41049 Sassuolo (MO) Italy
Telephone: +39 0536 800661, Telefax: +39 0536 806764

Iran Main Office

Unit 204, No.5, Golkhaneh Rd, Nelson Mandella Blvd, Tehran, Iran.
Zip Code: 1915843666
Telephone: +9821 22015382, +9821 22046884, +982122043744

www.angeloceramica.com

www.instagram.com/angeloceramica.it

